



Marywood

UNIVERSITY



FACT BOOK 2013-2014

Office of Planning and Institutional Research



Mission Statement

Marywood University, sponsored by the Congregation of the Sisters, Servants of the Immaculate Heart of Mary, roots itself in the Catholic intellectual tradition, the principle of justice, and the belief that education empowers people. The University integrates an enduring liberal arts tradition and professional disciplines to create a comprehensive learning experience. Our undergraduate and graduate programs promote academic excellence, advance innovative scholarship, and foster leadership in service to others. Within a welcoming and supportive community, Marywood challenges individuals of all backgrounds to achieve their full potential and make choices based on spiritual and ethical values. Marywood University prepares students to seek sustainable solutions for the common good and educates global citizens to live responsibly in an interdependent world.

MEMORANDUM

TO: Marywood University Colleagues

FROM: Dr. Ellen Boylan
Director of Planning and Institutional Research

RE: *Fact Book 2013-2014*

DATE: November 2013

The Marywood University *Fact Book 2013-2014*, nineteenth edition, presents concise tables of data counts and trends on students, personnel, finances and facilities. Input is submitted by many campus departments and units and then assembled and published by the Office of Planning and Institutional Research. Sincere thanks to our campus colleagues for their assistance.

Reflected in this *Fact Book* are data on important recent activity:

- Establishment this year of the Center for Interdisciplinary Studies (CIS) to house the Marywood University Ph.D. program; data are backdated for historical purposes.
- Admissions data showing five years of SAT scores for all sections, Critical Reading, Mathematics and Writing.
- The addition of three degree programs, BS Computer Science, BS Information Security and MS Information Security.

Footnotes on selected pages clarify important institutional changes.

The *Fact Book* is available for download and printing. For access, sign in to the *MarywoodYOU* portal and click on the Documents tab. Find the Document Type: University, choose the Section: General and the Factbook will appear in the documents listed. It is also available to the general public. Go to the Marywood University Office of Planning and Institutional Research web page at <http://www.marywood.edu/instresearch>.

We welcome your comments and suggestions for producing a *Fact Book* with the most timely and useful information possible for the entire campus. The contact person in the Office of Planning and Institutional Research for questions and comments on the *Fact Book 2013-2014* is Ms. Charlotte Woodward, Assistant Director of Institutional Research, who may be reached at woodward@marywood.edu or 570-348-6203.

/ld

TABLE OF CONTENTS

I STUDENTS

A.	Synopsis of Baccalaureate Degree Programs and Majors	1
B.	Synopsis of Graduate Degree Programs	3
C.	Degrees Granted by College and Department.....	5
D.	Admissions Activity	
1.	Undergraduate.....	9
♦	<i>Trends in Undergraduate Admissions Activity</i>	9
2.	Graduate	10
♦	<i>Graduate Admissions Funnel by College</i>	11
E.	Average SAT Scores for First-time Full-time Freshmen	12
♦	<i>Trends in SAT Scores of First-time Full-time Freshmen</i>	12
F.	Fall Headcount and FTE Enrollment by College and Time Status	13
G.	Fall Headcount Enrollment by College and Race/Ethnicity	17
♦	<i>Trends in Total Undergraduate Enrollment</i>	19
♦	<i>Trends in Total Graduate Enrollment</i>	19
H.	Fall Headcount Enrollment by College, Department and Level.....	20
I.	Fall Headcount Enrollment by College and Gender.....	22
J.	Fall Undergraduate Enrollment by On/Off-Campus Living.....	24
K.	Students with Disabilities.....	24
L.	Study Abroad Program - Location and Majors of Students	24
M.	International Student Enrollment	
1.	By Country.....	25
2.	By Major.....	25
N.	Honors Program	
1.	Majors Represented in Honors Program	26
2.	Honors Courses Offered.....	26
O.	Retention and Graduation Rates	
♦	<i>Trends in 6-year Graduation Rates of First-time Full-time Freshmen</i>	27
♦	<i>Trends in Freshman Class 1-Year Retention and 6-year Graduation</i>	28
P.	Athletics and Recreation.....	29

II PERSONNEL

A.	Employees by Ethnicity, EEO Category and Time Status	30
B.	Full-time Employees by Gender and Ethnicity.....	31
C.	Faculty	
1.	Number of Full-time and Pro-rata Faculty by College	32
2.	Tenure Status Among Full-time Faculty.....	32
3.	Number of Full-time Faculty by Rank and Gender	33
4.	Number of Full-time Faculty with Terminal Degrees	33

IV	FINANCES	
	A.	Unrestricted Operating Revenues 34
	B.	Percent Distribution of Unrestricted Operating Revenues 35
	C.	Unrestricted Operating Expenditures..... 36
	D.	Percent Distribution of Unrestricted Operating Expenditures..... 36
	E.	Externally Sponsored Research as a Percentage of Unrestricted Operating Expenditures 37
	F.	Endowment, Quasi-Endowment and Other Long-Term Investments 37
	G.	Tuition, Fees and Room & Board Charges 38
	H.	Total Cost at Marywood and AICUP Peer Institutions..... 39
		♦ <i>Tuition and Fees: AICUP Comparison Group Average v. Marywood</i> 40
	I.	Student Financial Aid 40
	J.	Total Gifts and Grants 41
	K.	Alumni Giving..... 41
	L.	Office of Research and Sponsored Programs 41
	M.	Comparison of Gift Levels by Campaign Year 42
		♦ <i>Total Presidential Society Giving</i> 42
V	FACILITIES	
	A.	Land and Building Inventory 43
	B.	University Library 44
	C.	Office of Information Technology..... 45
VI	ACCREDITATIONS 47
VII	STRATEGIC PLAN 2010-2015 GOALS AND OBJECTIVES <i>Inside back cover</i>

I. STUDENTS

Synopsis of Baccalaureate Degree Programs and Majors

(Total 63)

BA Advertising and Public Relations	BA Musical Theatre
BA Art Education	BA Philosophy
BA Art Therapy	BA Religious Studies
BA Arts Administration (Art)	BA Sociology
BA Arts Administration (Corporate)	BA Spanish
BA Arts Administration (Music)	BA Spanish/Secondary Education
BA Arts Administration (Theatre)	BA Theatre
BA Broadcast Journalism	BArch Architecture
BA Communication Arts/Secondary Education (Nonprint Media)	BBA Accounting
BA Communication Arts/Secondary Education (Theatre)	BBA Aviation Management (Airport/Airline Management)
BA Comprehensive Social Sciences (General)	BBA Aviation Management (Professional Pilot/Flight Operations)
BA Criminal Justice	BBA Business Information Technology
BA Digital Media and Broadcast Production (Broadcast)	BBA Financial Planning
BA Digital Media and Broadcast Production (Corporate)	BBA Hospitality Management
BA English	BBA International Business
BA English/Secondary Education	BBA Management
BA French	BBA Marketing
BA French/Secondary Education	BBA Retail Business Management
BA Health Services Administration (General)	BEDA Environmental Design - Architecture
BA Health Services Administration (Gerontology)	BFA Design (Graphic Design)
BA History	BFA Design (Interior Architecture/Design)
BA History/Political Science	BFA Design (Photography)
BA History/Political Science (Pre-law)	BFA Studio Art (Ceramics)
BA History-Social Science/Secondary Education	BFA Studio Art (Illustration)
	BFA Studio Art (Painting)
	BFA Studio Art (Sculpture)

Synopsis of Baccalaureate Degree Programs and Majors

(Continued)

BM	Music Education	BS	Health Sciences
BM	Music Performance	BS	Information Security
BM	Music Therapy	BS	Mathematics
BS	Athletic Training	BS	Mathematics/Secondary Education
BS	Biology	BS	Medical Laboratory Science
BS	Biology (Pre-Chiropractic)	BS	Nutrition and Dietetics
BS	Biology (Pre-Professional)	BS	Nutrition and Dietetics/Spanish
BS	Biology/Secondary Education	BS	Pre-Physician Assistant Studies
BS	Biotechnology	BS	Psychology
BS	Communication Sciences and Disorders (Deaf Studies)	BS	Psychology (Clinical Practices)
BS	Communication Sciences and Disorders (Pre-Professional)	BS	Psychology (Industrial/Organizational)
BS	Computer Science	BS	Special Education
BS	Early Childhood Education	BS	Special Education/English Secondary
BS	Early Childhood Education/Special Education	BS	Special Education/English-Science
BS	Elementary Education	BS	Special Education/Mathematics Secondary
BS	Environmental Science	BS	Special Education/Math-English
BS	Family and Consumer Science Education	BS	Special Education/Math-Science
BS	General Science/Secondary Education	BS	Special Education/Math-Social Studies
BS	Health and Physical Education (Education)	BS	Special Education/Social Studies-Science
BS	Health and Physical Education (Physical Activity)	BSN	Nursing – Pre-Service
		BSN	Nursing – RN
		BSW	Social Work

Total Undergraduate Major Programs: 63

Synopsis of Graduate Degree Programs

(Total 36 Masters, 1 Educational Specialist, 2 Doctoral)

MA	Art Education	MEd	Instructional Leadership
MA	Art Therapy	MFA	Visual Arts (Advertising Design)
MA	Communication Arts (Interdisciplinary)	MFA	Visual Arts (Clay)
MA	Communication Arts (Media Management)	MFA	Visual Arts (Graphic Design)
MA	Communication Arts (Production)	MFA	Visual Arts (Illustration)
MA	Mental Health Counseling (General)	MFA	Visual Arts (Painting)
MA	Music Education	MFA	Visual Arts (Photography)
MA	Psychology (Clinical Services)	MFA	Visual Arts (Printmaking)
MA	Psychology (General Theoretical)	MFA	Visual Arts (Sculpture)
MA	Studio Art (Advertising Design)	MHSA	Health Services Administration
MA	Studio Art (Ceramics)	MMT	Music Therapy
MA	Studio Art (Clay)	MPA	Public Administration
MA	Studio Art (Graphic Design)	MS	Biotechnology
MA	Studio Art (Illustration)	MS	Counselor Education-Elementary
MA	Studio Art (Interior Architecture)	MS	Counselor Education – K-12
MA	Studio Art (Painting)	MS	Counselor Education-Secondary
MA	Studio Art (Photography)	MS	Criminal Justice
MA	Studio Art (Printmaking)	MS	Early Childhood Intervention
MA	Studio Art (Sculpture)	MS	Financial Information Systems
MA	Studio Art (Weaving)	MS	Gerontology
MArch	Architecture	MS	Higher Education Administration
MAT	PK-4 Education	MS	Information Security
MAT	Secondary/K-12 Education	MS	Management Information Systems
MBA	Business Administration (General Management)	MS	Nutrition
MBA	Business Administration (Finance and Investments)	MS	Physician Assistant Studies
MBA	Business Administration (Management Information Systems)	MS	Reading Education
		MS	School Leadership
		MS	Special Education
		MS	Special Education Administration and Supervision

Synopsis of Graduate Degree Programs

(Continued)

MS	Speech-Language Pathology	PhD	Human Development (Health Promotion)
MS	Sports Nutrition and Exercise Science		
MSW	Social Work	PhD	Human Development (Higher Education Administration)
EdS	School Psychology		
PhD	Human Development (Educational Administration)	PhD	Human Development (Instructional Leadership)
		PhD	Human Development (Social Work)
		PsyD	Clinical Psychology

Total Master's Degree Programs: 36
Educational Specialist Degrees: 1
Total Doctoral Degrees: 2, with 5 PhD tracks

**Degrees Granted by College and Department
July 1, 2008 to June 30, 2013**

School of Architecture

		<u>2008-09</u>	<u>2009-10</u>	<u>2010-11</u>	<u>2011-12</u>	<u>2012-13</u>
Architecture						
	B.E.D.A					4
	B.F.A.			13	13	16
	M.A.			7	9	4
Total Bachelors				13	13	20
Total Masters				7	9	4

Insalaco College of Creative and Performing Arts

		<u>2007-08</u>	<u>2008-09</u>	<u>2009-10</u>	<u>2010-11</u>	<u>2012-13</u>
Art						
	B.A.	20	22	24	18	19
	B.F.A.	62	39	51	44	41
	M.A.	19	11	12	16	18
	M.F.A.	16	16	19	13	15
Communication Arts						
	B.A.	13	22	12	26	18
	M.A.	11	8	16	9	12
	M.S.	3	8	0	0	0
Music, Theatre & Dance						
	B.A.	4	7	8	7	7
	B.M.	9	9	10	10	17
	M.A.	3	4	0	1	1
Ad Hoc						
	M.A.	7	0	0	0	0
Total Bachelors		108	99	105	105	102
Total Masters		59	47	47	39	46

Degrees Granted by College and Department
July 1, 2008 to June 30, 2013
 (continued)

Reap College of Education and Human Development

	<u>2008-09</u>	<u>2009-10</u>	<u>2010-11</u>	<u>2011-12</u>	<u>2012-13</u>
Communication Science and Disorders					
B.S.	14	16	21	24	18
M.S.	18	21	15	21	22
Counseling/Psychology					
B.S.	28	27	30	25	32
M.A.	32	37	28	45	36
M.S.	7	18	11	8	5
Ed.S.	9	4	2	16	10
Psy.D.	7	11	10	5	5
Education¹					
B.S.	33	38	38	36	42
M.A.T.	12	28	19	20	23
M.Ed.	2	3	5	1	1
M.S.	31	22	32	29	25
Total Bachelors	75	81	89	85	92
Total Masters	102	129	110	124	112
Total Educational Specialist	9	4	2	16	10
Total Doctoral	7	11	10	5	5

Center for Interdisciplinary Studies²

	<u>2008-09</u>	<u>2009-10</u>	<u>2010-11</u>	<u>2011-12</u>	<u>2012-13</u>
Human Development					
Ph.D.	10	10	14	17	6

¹ Special Education is now being reported within the Education department

² The Center for Interdisciplinary Studies was created beginning in July 2013. PhD Human Development was moved from EHD to CIS.

Degrees Granted by College and Department
July 1, 2008 to June 30, 2013
 (continued)

College of Health and Human Services

	<u>2008-09</u>	<u>2009-10</u>	<u>2010-11</u>	<u>2011-12</u>	<u>2012-13</u>
Health and Physical Education					
B.S.	15	16	25	30	23
M.S.	4	4	1	2	8
Nursing					
B.A.	2	3	2	0	0
B.S.	0	0	1	1	0
B.S.N.	27	23	23	18	21
M.S.	7	8	0	1	1
Nutrition and Dietetics					
B.S.	23	22	32	30	28
M.S.	14	10	7	9	13
Physician Assistant					
B.S.	10	15	0	0	0
M.S.	27	28	29	29	38
Social Work/Administrative Studies					
B.A.	0	0	0	6	4
B.S.W.	6	10	12	14	15
M.H.S.A.	6	4	9	13	8
M.P.A.	9	6	9	11	5
M.S.	0	0	2	1	0
M.S.W.	125	117	113	124	85
Total Bachelors	83	89	95	99	91
Total Masters	192	177	170	190	158

Degrees Granted by College and Department
July 1, 2008 to June 30, 2013
 (continued)

College of Liberal Arts and Sciences

	<u>2008-09</u>	<u>2009-10</u>	<u>2010-11</u>	<u>2011-12</u>	<u>2012-13</u>
Business and Managerial Science					
B.A.	0	1	0	0	0
B.B.A.	53	54	68	64	66
M.B.A.	18	13	22	17	10
M.S.	0	0	0	1	0
English					
B.A.	23	19	13	19	10
Foreign Languages					
B.A.	5	2	4	2	3
Mathematics					
B.S.	4	4	5	3	7
Philosophy					
B.A.	0	0	1	3	2
Religious Studies					
B.A.	2	0	2	2	1
Science					
B (Pre PA)	1	0	0	0	0
B.S.	21	29	50	51	44
M.S.	6	11	8	17	1
Social Sciences					
B.A.	25	25	32	40	21
B.S.	0	0	0	1	0
M.S.	3	11	7	8	7
Ad Hoc					
B.A.	0	0	1	0	0
Total Bachelors	134	135	176	185	154
Total Masters	27	33	37	43	18

University Overall

	<u>2008-09</u>	<u>2009-10</u>	<u>2010-11</u>	<u>2011-12</u>	<u>2012-13</u>
Total Bachelors Awarded	400	418	478	487	459
Total Masters Awarded	380	388	371	405	338
Total Educational Specialist Awarded	9	4	2	16	10
Total Doctoral Awarded	17	21	23	22	11
Total All Degrees Awarded	806	831	874	930	818

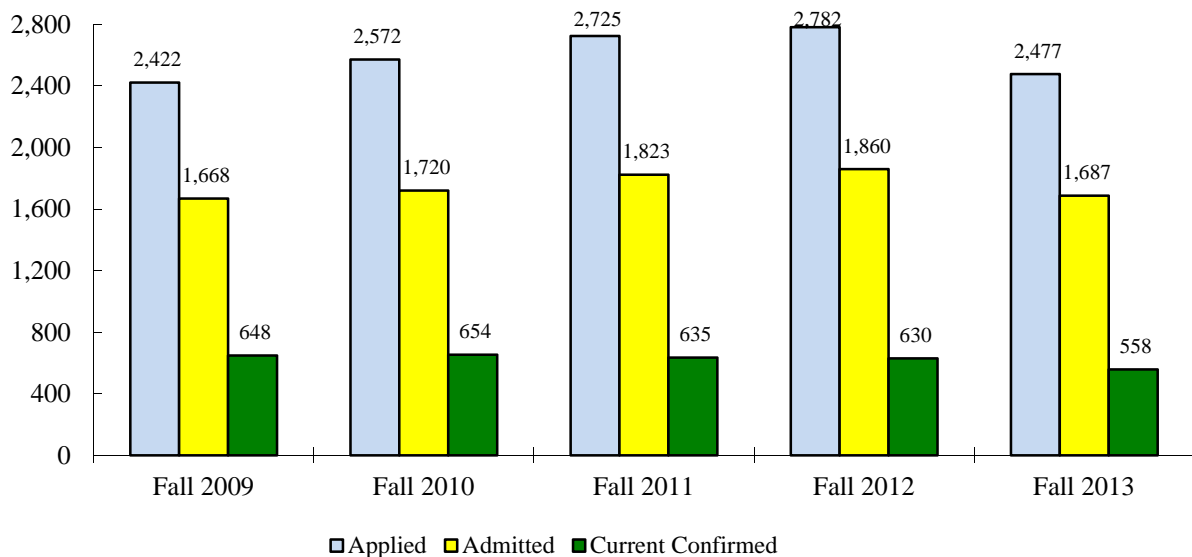
Admissions Activity

Undergraduate

Fall Full- and Part-time New Students

	2009	2010	2011	2012	2013	2009-13 % change
Applied	2,422	2,572	2,725	2,782	2,477	2.2
Freshman	1,923	2,062	2,203	2,284	2,021	4.8
Transfer	481	492	508	498	456	-5.5
Other	18	18	14	0	0	
Offered Admission	1,668	1,720	1,823	1,860	1,687	-1.1
Freshman	1,392	1,455	1,543	1,578	1,441	3.4
Transfer	261	257	272	282	246	-6.1
Other	15	8	8	0	0	
Offer Rate	68.9%	66.9%	66.9%	66.9%	68.1%	
Freshman	72.3%	70.6%	70.0%	69.1%	71.3%	
Transfer	54.3%	52.2%	53.5%	56.6%	53.9%	
Other	83.3%	44.4%	57.1%			
Current Confirmed	648	654	635	630	558	-16.1
Freshman	473	507	466	472	419	-12.9
Transfer	162	144	164	158	139	-16.5
Other	13	3	5	0	0	
Yield Rate	38.8%	38.0%	34.8%	33.9%	33.1%	
Freshman	34.0%	34.8%	30.2%	29.9%	29.1%	
Transfer	62.1%	56.0%	60.3%	56.0%	56.5%	
Other	86.7%	37.5%	62.5%			

Trends in Undergraduate Admissions Activity
Fall 2009 to Fall 2013



Admissions Activity (continued)
Graduate
Full- and Part-time New Students (by calendar year)

	<u>2009</u>	<u>2010</u>	<u>2011</u>	<u>2012</u>	<u>2013</u>	
CIS³						
Applied				37	32	
Accepted				12	17	
Enrolled				10	15	
CPA⁴						
Applied	140	117	152	130	85	
Accepted	91	65	87	79	63	
Enrolled	65	45	50	49	42	
EHD⁵						
Applied	693	809	783	527	377	
Accepted	343	409	448	283	193	
Enrolled	245	264	281	160	115	
HHS						
Applied	767	964	1,236	1,114	855	
Accepted	310	366	365	351	309	
Enrolled	250	280	263	227	211	
LAS⁶						
Applied	82	71	115	147	142	
Accepted	53	48	75	81	110	
Enrolled	40	35	50	45	64	
SOA⁷						
Applied	4	13	12	9	19	
Accepted	2	9	9	8	13	
Enrolled	0	9	8	4	12	
TOTAL						2009-13
						<u>% change</u>
Applied	1,686	1,974	2,298	1,964	1,510	-10.4
Accepted	799	897	989	814	705	-11.8
Enrolled	600	633	652	495	459	-23.5

³ The Center for Interdisciplinary Studies was created beginning in July 2013. PhD Human Development was moved from EHD to CIS.

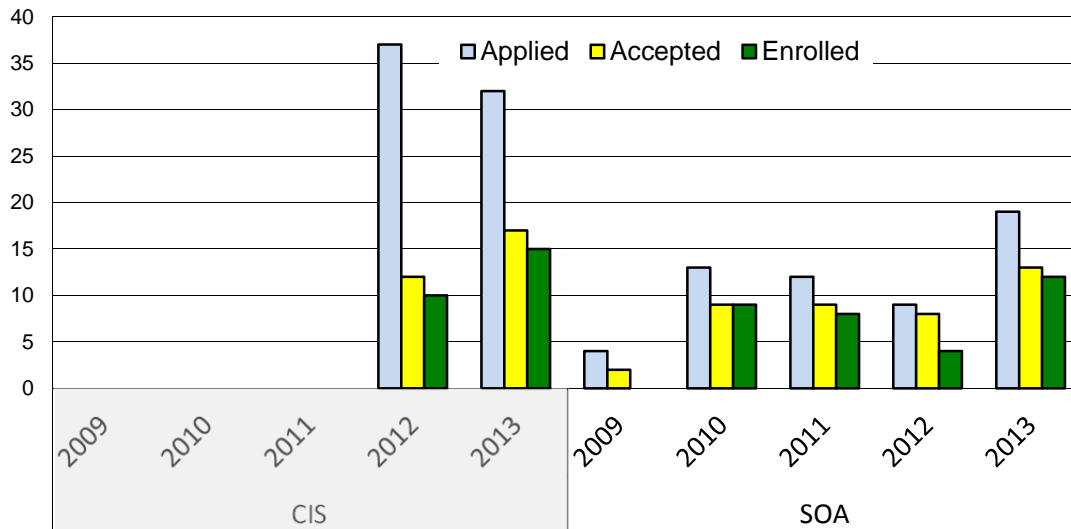
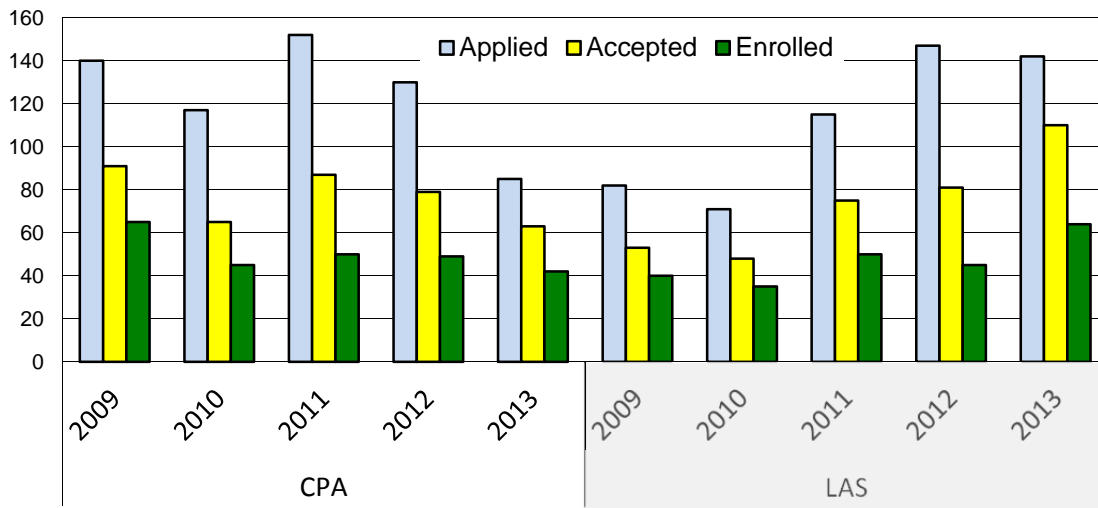
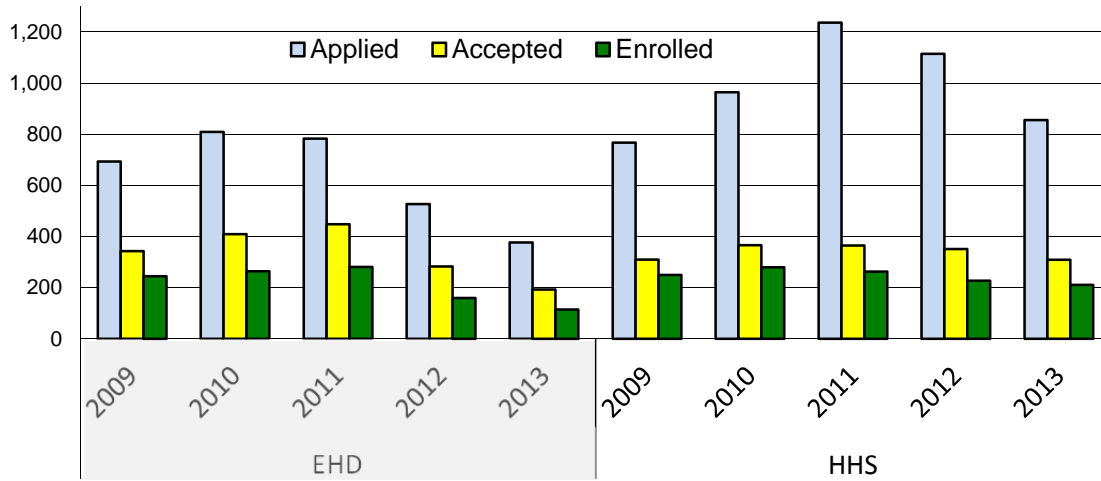
⁴ As of July 1, 2009, the Business Department was moved from CAM to LAS and CAM was renamed CPA. The School of Architecture (SOA) was opened and the BFA Design (Interior Design) and the MA Studio Art (Interior Architecture) programs were moved from the Art Department in CAM to SOA.

⁵ The Center for Interdisciplinary Studies was created beginning in July 2013. PhD Human Development was moved from EHD to CIS.

⁶ As of July 1, 2009, the Business Department was moved from CAM to LAS and CAM was renamed CPA.

⁷ As of July 1, 2009, the School of Architecture (SOA) was opened and the BFA Design (Interior Design) and the MA Studio Art (Interior Architecture) programs were moved from the Art Department in CAM to SOA.

Graduate Admissions Funnel by College/School⁸ 2009 - 2013



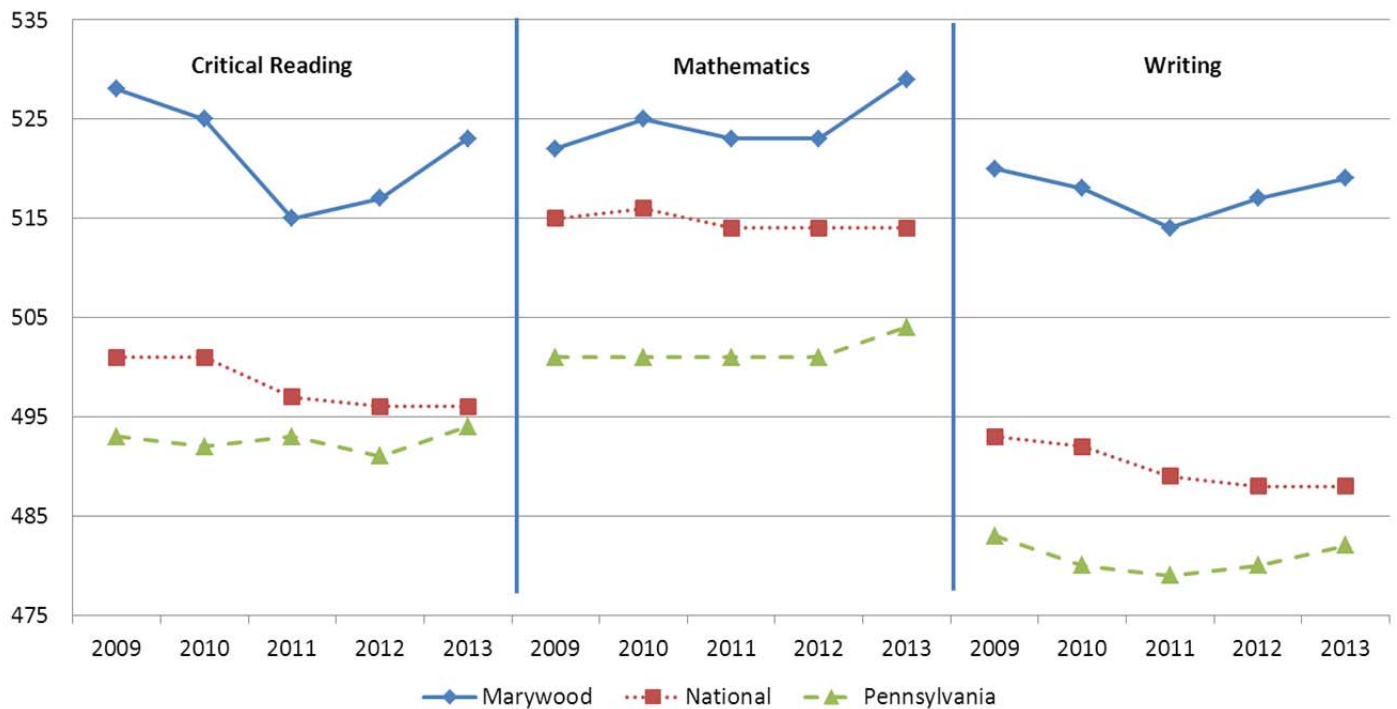
⁸ Note different scales on graph axes

Source: Marywood University Office of Admissions

Average SAT Scores for First-time Full-time Students

	Critical Reading	Math	Writing	Total
Fall '07	521	517	512	1550
Fall '08	522	518	510	1550
Fall '09	528	522	520	1570
Fall '10	525	525	518	1568
Fall '11	515	523	514	1552
Fall '12	517	523	517	1557
Fall '13	523	529	519	1571

Trends in SAT Scores of First-time Full-time Students



Fall Headcount and FTE* Enrollment by College and Time Status

Insalaco College of Creative and Performing Arts⁹

	2009	2010	2011	2012	2013
Undergraduate					
FT	430	438	396	375	362
PT	<u>16</u>	<u>25</u>	<u>11</u>	<u>21</u>	<u>17</u>
Total	446	463	407	396	379
FTE – Internal	435.9	447.8	400.1	382.2	368.8
FTE – IPEDS	435.3	446.3	399.7	382.0	367.7
Graduate					
FT	62	68	49	44	38
PT	<u>96</u>	<u>71</u>	<u>68</u>	<u>55</u>	<u>57</u>
Total	158	139	117	99	95
FTE – Internal	98.5	95.6	72.7	64.2	61.0
FTE – IPEDS	94.0	91.7	71.7	62.3	57.0
Total					
FT	492	506	445	419	400
PT	<u>112</u>	<u>96</u>	<u>79</u>	<u>76</u>	<u>74</u>
Total	604	602	524	494	474
FTE – Internal	534.4	543.4	472.8	446.4	429.8
FTE – IPEDS	529.3	538.0	471.3	444.3	424.7

Reap College of Education and Human Development¹⁰

	2009	2010	2011	2012	2013
Undergraduate					
FT	381	382	363	342	329
PT	<u>7</u>	<u>9</u>	<u>11</u>	<u>6</u>	<u>6</u>
Total	388	391	374	348	335
FTE – Internal	383.5	385.3	367.5	344.9	332.4
FTE – IPEDS	383.3	385.0	366.7	344.0	331.0
Graduate					
FT	167	192	193	197	182
PT	<u>276</u>	<u>200</u>	<u>187</u>	<u>142</u>	<u>131</u>
Total	443	392	380	339	313
FTE – Internal	268.8	268.3	261.4	248.5	229.0
FTE – IPEDS	259.0	258.7	255.3	244.3	225.7
Total					
FT	548	574	556	539	511
PT	<u>283</u>	<u>209</u>	<u>198</u>	<u>148</u>	<u>137</u>
Total	831	783	754	687	648
FTE – Internal	652.4	653.6	629.0	593.4	561.4
FTE – IPEDS	642.3	643.7	622.0	588.3	556.7

* FTE Internal = FT headcount + (PT credits/15 for undergraduate **or** PT credits/12 for graduate)
 FTE IPEDS = FT headcount + PT headcount/3

⁹ As of July 1, 2009, the Business Department was moved from CAM to LAS and CAM was renamed CPA. The School of Architecture (SOA) was opened and the BFA Design (Interior Design) and the MA Studio Art (Interior Architecture) programs were moved from the Art Department in CAM to SOA.

¹⁰ The Center for Interdisciplinary Studies was created beginning in July 2013. PhD Human Development was moved from EHD to CIS.

Fall Headcount and FTE* Enrollment by College and Time Status

(continued)

College of Health and Human Services

	2009	2010	2011	2012	2013
Undergraduate					
FT	361	402	412	390	305
PT	<u>21</u>	<u>17</u>	<u>18</u>	<u>22</u>	<u>13</u>
Total	382	419	430	412	318
FTE – Internal	369.8	411.5	420.5	398.7	312.0
FTE – IPEDS	368.0	407.7	418.0	397.3	309.3
Graduate					
FT	278	316	288	304	296
PT	<u>224</u>	<u>190</u>	<u>193</u>	<u>136</u>	<u>144</u>
Total	502	506	481	440	440
FTE – Internal	379.3	397.8	376.5	363.8	359.3
FTE – IPEDS	352.7	379.3	352.3	349.3	344.0
Total					
FT	639	718	700	694	601
PT	<u>245</u>	<u>207</u>	<u>211</u>	<u>158</u>	<u>157</u>
Total	884	925	911	852	758
FTE – Internal	749.1	809.3	797.1	762.5	671.4
FTE – IPEDS	720.7	787.0	770.3	746.7	653.3

College of Liberal Arts and Sciences¹¹

	2009	2010	2011	2012	2013
Undergraduate					
FT	766	731	748	745	727
PT	<u>52</u>	<u>55</u>	<u>44</u>	<u>42</u>	<u>42</u>
Total	818	786	792	787	769
FTE – Internal	785.3	751.4	763.9	763.1	747.3
FTE – IPEDS	783.3	749.3	762.7	759.0	741.0
Graduate					
FT	26	30	37	28	44
PT	<u>57</u>	<u>51</u>	<u>43</u>	<u>41</u>	<u>57</u>
Total	83	81	80	69	101
FTE – Internal	47.7	50.3	53.9	43.9	63.7
FTE – IPEDS	45.0	47.0	51.3	41.7	63.0
Total					
FT	792	761	785	773	771
PT	<u>109</u>	<u>106</u>	<u>87</u>	<u>83</u>	<u>99</u>
Total	901	867	872	856	870
FTE	833.0	801.7	817.8	807.0	810.9
FTE – IPEDS	828.3	796.3	814.0	800.7	804.0

* FTE Internal = FT headcount + (PT credits/15 for undergraduate or PT credits/12 for graduate)

FTE IPEDS = FT headcount + PT headcount/3

¹¹ As of July 1, 2009, the Business Department was moved from CAM to LAS and CAM was renamed CPA.

Fall Headcount and FTE* Enrollment by College and Time Status (continued)

School of Architecture¹²

	2009	2010	2011	2012	2013
Undergraduate					
FT	112	146	187	230	234
PT	<u>4</u>	<u>1</u>	<u>2</u>	<u>1</u>	<u>3</u>
Total	116	147	189	231	237
FTE – Internal	113.0	146.6	189.0	230.7	235.6
FTE – IPEDS	113.3	146.3	189.0	230.3	235.0
Graduate					
FT	0	6	8	6	10
PT	<u>2</u>	<u>1</u>	<u>1</u>	<u>0</u>	<u>1</u>
Total	2	7	9	6	11
FTE – Internal	1.0	6.5	8.5	6.0	10.3
FTE – IPEDS	0.67	6.3	8.3	6.0	10.3
Total					
FT	112	152	195	236	244
PT	<u>6</u>	<u>2</u>	<u>3</u>	<u>1</u>	<u>4</u>
Total	118	154	198	237	248
FTE – Internal	114.0	153.1	197.5	236.7	245.9
FTE – IPEDS	114.0	152.7	197.3	236.3	245.3

Center for Interdisciplinary Studies¹³

	2009	2010	2011	2012	2013
Graduate					
FT	5	4	7	5	6
PT	<u>94</u>	<u>83</u>	<u>69</u>	<u>65</u>	<u>61</u>
Total	99	87	76	70	67
FTE – Internal	37.4	32.5	29.6	27.8	25.7
FTE – IPEDS	36.3	31.7	30.0	26.7	26.3

Registrar

	2009	2010	2011	2012	2013
Undergraduate					
FT	3	7	2	25	4
PT	<u>31</u>	<u>54</u>	<u>61</u>	<u>45</u>	<u>106</u>
Total	34	61	63	70	110
FTE – Internal	9.1	17.9	12.4	35.8	25.1
FTE – IPEDS	13.3	25.0	22.3	40.0	39.3

* FTE Internal = FT headcount + (PT credits/15 for undergraduate or PT credits/12 for graduate)
FTE IPEDS = FT headcount + PT headcount/3

¹² As of July 1, 2009, the School of Architecture (SOA) was opened and the BFA Design (Interior Design) and the MA Studio Art (Interior Architecture) programs were moved from the Art Department in CAM to SOA.

¹³ The Center for Interdisciplinary Studies was created beginning in July 2013. PhD Human Development was moved from EHD to CIS.

Fall Headcount and FTE* Enrollment by College and Time Status
(continued)

Total University

	<u>2009</u>	<u>2010</u>	<u>2011</u>	<u>2012</u>	<u>2013</u>
Undergraduate					
FT	2,053	2,106	2,110	2,107	1,961
PT	<u>131</u>	<u>161</u>	<u>145</u>	<u>137</u>	<u>187</u>
Total	2,184	2,267	2,255	2,244	2,148
FTE – Internal	2,096.6	2,160.6	2,153.5	2,155.4	2,021.2
FTE – IPEDS	2,096.7	2,159.7	2,158.3	2,152.7	2,023.3
Graduate					
FT	538	616	582	584	576
PT	<u>749</u>	<u>596</u>	<u>561</u>	<u>439</u>	<u>451</u>
Total	1,287	1,212	1,143	1,023	1,027
FTE – Internal	832.7	850.1	802.7	754.2	749.0
FTE – IPEDS	787.7	814.7	769.0	730.3	726.3
Total					
FT	2,591	2,722	2,692	2,691	2,537
PT	<u>880</u>	<u>757</u>	<u>706</u>	<u>576</u>	<u>638</u>
Total	3,471	3,479	3,398	3,267	3,175
FTE – Internal	2,929.3	3,011.5	2,956.2	2,909.6	2,770.2
FTE – IPEDS	2,884.3	2,974.3	2,927.3	2,883.0	2,749.7

* FTE Internal = FT headcount + (PT credits/15 for undergraduate or PT credits/12 for graduate)
FTE IPEDS = FT headcount + (PT headcount/3)

Fall Headcount Enrollment by College and Ethnicity/Race¹⁴

	2009	2010	2011	2012	2013
Insalaco College of Creative and Performing Arts¹⁵					
Hispanic	18	20	18	20	16
White	501	510	431	399	372
Other/Unknown	82	69	68	70	76
Two or more			3	2	3
Non-resident Alien	3	3	4	4	7
Reap College of Education and Human Development¹⁶					
Hispanic	14	17	14	16	16
White	723	692	653	566	539
Other/Unknown	91	69	75	97	83
Two or more			5	3	3
Non-resident Alien	3	5	7	5	7
College of Health and Human Services					
Hispanic	31	27	27	26	45
White	720	753	724	603	522
Other/Unknown	120	134	152	207	164
Two or more			3	2	4
Non-resident Alien	13	11	5	14	23
College of Liberal Arts and Sciences¹⁷					
Hispanic	28	34	38	48	50
White	750	743	708	668	640
Other/Unknown	110	77	114	125	136
Two or more			2	8	12
Non-resident Alien	13	13	10	7	32
School of Architecture¹⁸					
Hispanic	5	5	11	13	13
White	99	131	163	193	207
Other/Unknown	14	18	23	28	25
Two or more			1	1	2
Non-resident Alien	0	0	0	2	1

¹⁴ As of July 1, 2011, expanded IPEDS category, Race/Ethnicity, included "Two or more"

¹⁵ As of July 1, 2009, the Business Department was moved from CAM to LAS and CAM was renamed CPA. The School of Architecture (SOA) was opened and the BFA Design (Interior Design) and the MA Studio Art (Interior Architecture) programs were moved from the Art Department in CAM to SOA.

¹⁶ As of July 1, 2013 the PhD program in Human Development was moved from the College of Education and Human Development to the Center for Interdisciplinary Studies.

¹⁷ As of July 1, 2009, the Business Department was moved from CAM to LAS and CAM was renamed CPA.

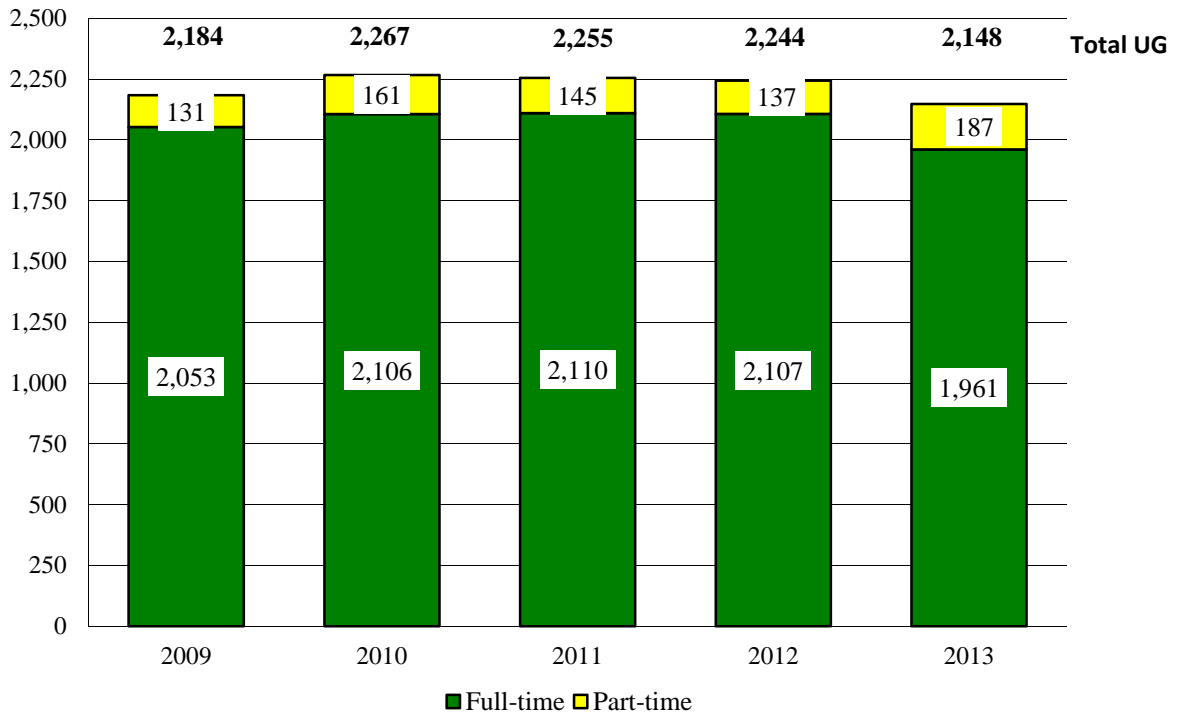
¹⁸ As of July 1, 2009, the School of Architecture (SOA) was opened and the BFA Design (Interior Design) and the MA Studio Art (Interior Architecture) programs were moved from the Art Department in CAM to SOA.

Fall Headcount Enrollment by College and Ethnicity/Race (continued)

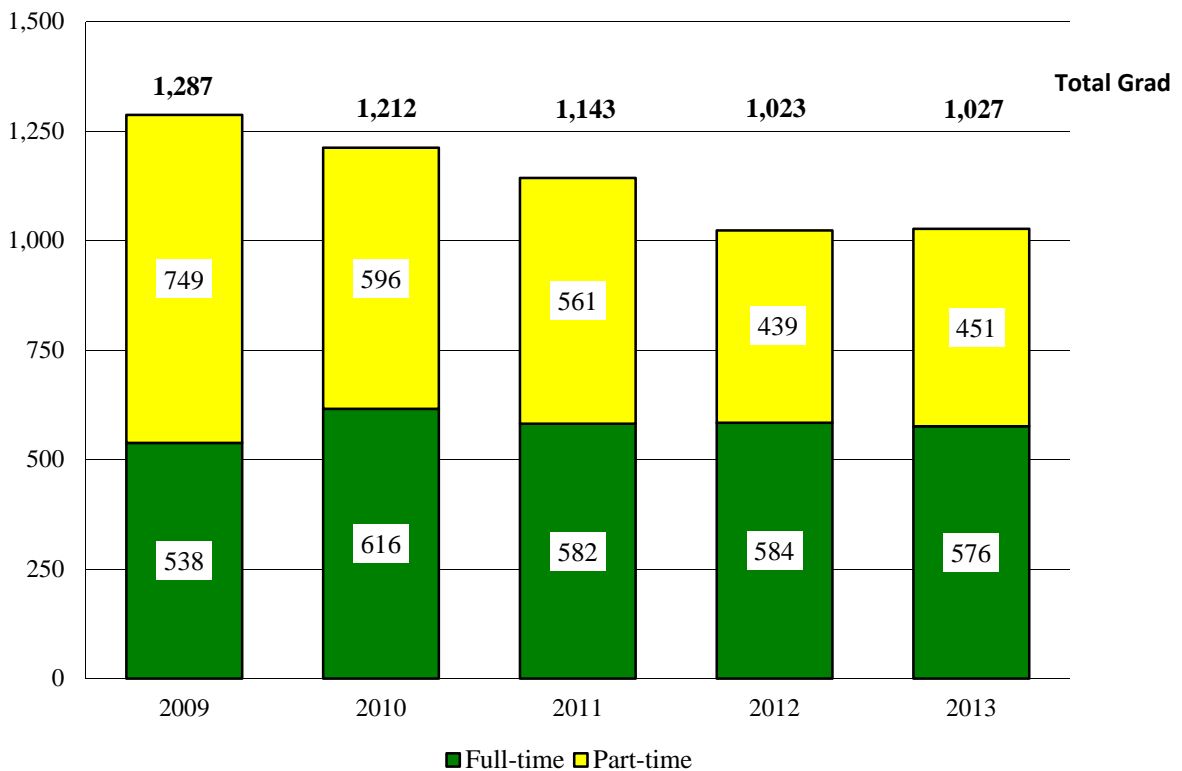
	2009	2010	2011	2012	2013
Center for Interdisciplinary Studies¹⁹					
Hispanic	2	1	0	1	2
White	86	76	66	58	56
Other/Unknown	10	8	9	9	7
Two or more			0	0	0
Non-resident Alien	1	2	1	2	2
Registrar					
Hispanic	0	1	1	0	1
White	6	24	24	16	10
Other/Unknown	22	20	23	33	53
Non-resident Alien	6	16	15	21	46
 TOTAL UNDERGRADUATE					
Hispanic	60	71	81	105	104
White	1,857	1,950	1,877	1,806	1,652
Other/Unknown	244	215	263	286	301
Two or more			8	16	23
Non-resident Alien	23	31	25	31	68
 TOTAL GRADUATE					
Hispanic	38	34	28	19	39
White	1,028	979	892	697	693
Other/Unknown	205	180	200	283	244
Two or more			6	0	1
Non-resident Alien	16	19	17	24	50
 TOTAL UNIVERSITY					
Hispanic	98	105	109	124	143
White	2,885	2,929	2,769	2,503	2,345
Other/Unknown	449	395	464	569	535
Two or more			14	16	24
Non-resident Alien	39	50	42	55	118

¹⁹ As of July 1, 2013 the PhD program in Human Development was moved from the College of Education and Human Development to the Center for Interdisciplinary Studies.

Trends in Total Undergraduate Enrollment Fall 2009 to Fall 2013



Trends in Total Graduate Enrollment Fall 2009 to Fall 2013



Headcount Enrollment by College, Department and Level – Fall 2009 to Fall 2013

		2009	2010	2011	2012	2013
Insalaco College of Creative and Performing Arts²⁰						
Art	Undergraduate	286	296	251	228	213
	Graduate	95	91	77	65	66
Communication Arts	Undergraduate	70	73	76	82	77
	Graduate	42	34	28	25	17
Music, Theatre & Dance	Undergraduate	90	91	76	84	89
	Graduate	11	8	5	3	5
Dean/Academic Advising	Undergraduate	0	3	4	2	0
	Graduate	10	6	7	6	7
Reap College of Education and Human Development²¹						
Communication Disorders	Undergraduate	77	85	77	83	95
	Graduate	30	20	29	24	24
Counseling/Psychology	Undergraduate	117	121	126	131	139
	Graduate	168	163	168	166	180
Education	Undergraduate	152	149	150	115	101
	Graduate	212	195	169	127	103
Dean/Academic Advising	Undergraduate	42	36	21	19	0
	Graduate	33	14	14	22	6
Center for Interdisciplinary Studies²²						
Human Development	Graduate	99	87	76	70	67

²⁰ As of July 1, 2009, the Business Department was moved from CAM to LAS and CAM was renamed CPA. The School of Architecture (SOA) was opened and the BFA Design (Interior Design) and the MA Studio Art (Interior Architecture) programs were moved from the Art Department in CAM to SOA.

²¹ As of July 1, 2013, the Center for Interdisciplinary Studies was formed and the PhD Human Development program was moved to CIS.

²² Ibid

Headcount by College, Department and Level – Fall 2009 to Fall 2013

(continued)

		2009	2010	2011	2012	2013
College of Health and Human Services						
Health & Physical Education	Undergraduate	105	112	116	92	76
	Graduate	5	4	2	14	6
Nursing ²³	Undergraduate	104	109	115	123	69
	Graduate	7	3	2	1	0
Nutrition and Dietetics	Undergraduate	112	125	137	128	115
	Graduate	49	60	62	55	53
Physician Assistant	Undergraduate	0	0	0	0	1
	Graduate	45	51	54	62	67
School of Social Work and Administrative Studies ²⁴	Undergraduate	52	61	59	57	57
	Graduate	371	372	341	284	308
Dean/Academic Advising	Undergraduate	9	12	3	12	0
	Graduate	25	16	20	24	6
College of Liberal Arts and Sciences²⁵						
Business	Undergraduate	247	252	228	234	230
	Graduate	45	45	42	43	73
English	Undergraduate	68	57	59	54	39
Foreign Languages	Undergraduate	9	12	17	17	15
Mathematics	Undergraduate	26	25	25	22	18
Philosophy	Undergraduate	1	6	3	2	3
Religious Studies	Undergraduate	3	3	3	5	2
Science	Undergraduate	214	214	224	221	250
	Graduate	8	11	14	6	13
Social Science	Undergraduate	137	137	135	115	123
	Graduate	28	21	16	17	12
Dean/Academic Advising	Undergraduate	113	80	98	117	89
	Graduate	2	4	8	3	3
School of Architecture²⁶						
Architecture	Undergraduate	0	0	0	0	31
Environmental Design	Undergraduate	49	88	120	159	137
Interior Architecture	Undergraduate	67	59	69	72	69
	Graduate	2	7	9	6	11
Registrar						
	IEP	6	16	15	23	43
	Undergraduate	28	45	48	47	67

²³ As of July 1, 2011, the MPA Public Administration program and the BA and MHSA Health Services Administration programs were moved from the Nursing department to the School of Social Work and Administrative Studies.

²⁴ Ibid.

²⁵ As of July 1, 2009, the Business Department was moved from CAM to LAS and CAM was renamed CPA.

²⁶ As of July 1, 2009, the School of Architecture (SOA) was opened and the BFA Design (Interior Design) and the MA Studio Art (Interior Architecture) programs were moved from the Art Department in CAM to SOA.

Headcount Enrollment by College and Gender

	2009	2010	2011	2012	2013	
					N	%
Insalaco College of Creative and Performing Arts²⁷						
Undergraduate						
Women	321	340	301	306	290	76.5
Men	<u>125</u>	<u>123</u>	<u>106</u>	<u>90</u>	<u>89</u>	23.5
Total	446	463	407	396	379	
Graduate						
Women	112	102	79	75	72	75.8
Men	<u>46</u>	<u>37</u>	<u>38</u>	<u>24</u>	<u>23</u>	24.2
Total	158	139	117	99	95	
Reap College of Education and Human Development²⁸						
Undergraduate						
Women	345	354	339	313	296	88.4
Men	<u>43</u>	<u>37</u>	<u>35</u>	<u>35</u>	<u>39</u>	11.6
Total	388	391	374	348	335	
Graduate						
Women	372	324	301	282	249	79.6
Men	<u>71</u>	<u>68</u>	<u>79</u>	<u>57</u>	<u>64</u>	20.4
Total	443	392	380	339	313	
College of Health and Human Services						
Undergraduate						
Women	294	323	323	319	247	77.7
Men	<u>88</u>	<u>96</u>	<u>107</u>	<u>93</u>	<u>71</u>	22.3
Total	382	419	430	412	318	
Graduate						
Women	422	419	410	368	355	80.7
Men	<u>80</u>	<u>87</u>	<u>71</u>	<u>72</u>	<u>85</u>	19.3
Total	502	506	481	440	440	
College of Liberal Arts and Sciences²⁹						
Undergraduate						
Women	460	437	456	446	416	54.1
Men	<u>358</u>	<u>349</u>	<u>336</u>	<u>341</u>	<u>353</u>	45.9
Total	818	786	792	787	769	
Graduate						
Women	41	46	44	28	42	41.6
Men	<u>42</u>	<u>35</u>	<u>36</u>	<u>41</u>	<u>59</u>	58.4
Total	83	81	80	69	101	

²⁷ As of July 1, 2009, the Business Department was moved from CAM to LAS and CAM was renamed CPA. The School of Architecture (SOA) was opened and the BFA Design (Interior Design) and the MA Studio Art (Interior Architecture) programs were moved from the Art Department in CAM to SOA.

²⁸ As of July 1, 2013, the Center for Interdisciplinary Studies was formed and the PhD Human Development program was moved to CIS.

²⁹ As of July 1, 2009, the Business Department was moved from CAM to LAS and CAM was renamed CPA.

Headcount Enrollment by College and Gender

(continued)

	<u>2009</u>	<u>2010</u>	<u>2011</u>	<u>2012</u>	<u>2013</u>	
					N	%
School of Architecture³⁰						
Undergraduate						
Women	76	85	106	122	115	48.5
Men	<u>40</u>	<u>62</u>	<u>83</u>	<u>109</u>	<u>122</u>	51.5
Total	116	147	189	231	237	
Graduate						
Women	2	7	8	6	11	100.0
Men	<u>0</u>	<u>0</u>	<u>1</u>	<u>0</u>	<u>0</u>	0.0
Total	2	7	9	6	11	
Center for Interdisciplinary Studies³¹						
Graduate						
Women	74	62	53	46	45	67.2
Men	<u>25</u>	<u>25</u>	<u>23</u>	<u>24</u>	<u>22</u>	32.8
Total	99	87	76	70	67	
Registrar						
Undergraduate						
Women	23	42	33	44	70	63.6
Men	<u>11</u>	<u>19</u>	<u>30</u>	<u>26</u>	<u>40</u>	36.4
Total	34	61	63	70	110	
Total University						
Undergraduate						
Women	1,519	1,581	1,558	1,550	1,434	66.8
Men	<u>665</u>	<u>686</u>	<u>697</u>	<u>694</u>	<u>714</u>	33.2
Total	2,184	2,267	2,255	2,244	2,148	
Graduate						
Women	1,023	960	895	805	774	75.4
Men	<u>264</u>	<u>252</u>	<u>248</u>	<u>218</u>	<u>253</u>	24.6
Total	1,287	1,212	1,143	1,023	1,027	

³⁰ As of July 1, 2009, the School of Architecture (SOA) was opened and the BFA Design (Interior Design) and the MA Studio Art (Interior Architecture) programs were moved from the Art Department in CAM to SOA.

³¹ As of July 1, 2013, the Center for Interdisciplinary Studies was formed and the PhD Human Development program was moved to CIS.

Fall Full-time Undergraduate Enrollment by On/Off-Campus Living

		Fall 2009	Fall 2010	Fall 2011	Fall 2012	Fall 2013
On-Campus						
Freshmen		386	388	393	371	335
Total	Women	703	764	783	771	678
	Men	<u>259</u>	<u>249</u>	<u>282</u>	<u>253</u>	<u>248</u>
Total		962	1,013	1,065	1,024	926
Percent of Total Full-time		47%	48%	50%	49%	47%
Off-Campus						
Full-time	Women	731	708	695	699	636
	Men	<u>356</u>	<u>378</u>	<u>352</u>	<u>386</u>	<u>394</u>
Total		1,087	1,086	1,047	1,085	1,030
Part-time	Women	59	66	80	80	46
	Men	<u>36</u>	<u>38</u>	<u>63</u>	<u>55</u>	<u>30</u>
Total		95	104	143	135	76

Students with Disabilities

	<u>2009</u>	<u>2010</u>	<u>2011</u>	<u>2012</u>	<u>2013</u>
Undergraduate:	112	136	128	134	155
	5.1%	6.0%	5.7%	6.0%	7.2%
Graduate:	26	34	32	41	43
	2.0%	2.8%	2.8%	4.0%	4.2%

Study Abroad Program Locations and Majors of Students Fall 2013

Italy	SACI Summer Academic Semester Program	BA Art Therapy
United Kingdom	King's College London Semester	BA Philosophy
Spain	University of Salamanca: Advanced Spanish	BA Spanish
Italy	John Cabot University	BBA Marketing
Italy	Institute at Palazzo Rucellai	BEDA Environmental Design – Architecture
Italy	SACI Summer Academic Semester Program	BFA Design (Graphic Design)

13 students are currently studying abroad

International Student Enrollment

	Fall 2009		Fall 2010		Fall 2011		Fall 2012		Fall 2013	
	N	%	N	%	N	%	N	%	N	%
Undergraduate	23	1.1	31	1.4	25	1.1	31	1.4	68	3.2
Graduate	16	1.2	19	1.6	17	1.5	24	2.3	50	4.9

By Country of Origin – Fall 2013

Undergraduate:

Australia	1
China	11
Columbia	1
Congo	1
Georgia	1
Honduras	1
India	1
Iraq	8
Malaysia	2
Republic of Korea	5
Saudi Arabia	34
Taiwan	1
Tanzania	1

Total Undergraduate: 68 (3.2%)

Graduate:

Canada	1
China	7
Georgia	1
Greece	1
Haiti	1
India	6
Iraq	1
Peru	1
Saudi Arabia	31
Total Graduate:	50 (4.9%)

By Major Course of Study – Fall 2013

Undergraduate:

Undeclared, Interest in Education
 BA Art Therapy
 BA Digital Media & Broadcast Production
 (Broadcast)
 BA History/Political Science (Pre-law)
 BBA Accounting
 BBA Aviation Management (Airline/Port Mgt)
 BBA Financial Planning
 BBA International Business
 BBA Marketing
 BM Music Performance
 BS Biology
 BS Biotechnology
 BS Medical Laboratory Science
 BS Nutrition and Dietetics
 BS Psychology
 Intensive English Program
 International Exchange

Graduate:

MA Art Therapy
 MA Communication Arts (Media Management)
 MA Psychology (Clinical Services)
 MA Studio Art (Interior Architecture)
 MA Studio Art (Painting)
 MAT Secondary/K-12 Education
 MBA Bus Adm (Finance/Investment)
 MBA Bus Adm (General Management)
 MEd Instructional Leadership
 MFA Visual Arts (Clay)
 MHSA Health Services Administration
 MS Management Information Systems
 MS Nutrition
 MSW Social Work
 Ph.D. Human Development (Health Promotion)

Honors Program - Majors Represented

B Undeclared. Program Interest Unspecified	BM Music Education
B Pre-Physician Assistant Studies	BM Music Performance
BA Advertising and Public Relations	BM Music Therapy
BA Art Therapy	BS Biology
BA Arts Admin (Art)	BS Biology (Pre-professional)
BA Digital Media and Broadcast Production (Corporate)	BS Biotechnology
BA English	BS Communication Science & Disorders (Pre-professional)
BA English/Secondary Ed	BS Early Childhood Education
BA History	BS Mathematics
BA History/Political Science (Pre-law)	BS Mathematics/Secondary Ed
BA Philosophy	BS Nutrition and Dietetics
BA Spanish/Secondary Ed	BS Psychology
BBA Marketing	BS Psychology (Clinical Practice)
BEDA Environmental Design-Architecture	BS Psychology (Industrial/Organization)
BFA Design (Graphic Design)	BS Special Education
BFA Studio Art (Illustration)	BSW Social Work
BFA Studio Art (Sculpture)	

Honors Courses Offered in 2013-2014

Fall 2013

ART	History of Art I	N D	Community Nutrition
	Advanced Graphic Design		Sports Nutrition in Health Promotion
	Illustration		Supervised Practice in Community
	History of Graphic Design	PHIL	Introduction to Philosophy
	Contemporary Art History	PSYC	General Psychology
	Art Therapy Applications		Special Topics
CHEM	Organic Chemistry		Abnormal Behavior in Children and Adolescents
COMM	Writing for Corporate Communication	R ST	Modern Belief
ENGL	Composition and Rhetoric	SOC	Studies in Urbanization
	Children's Literature	SPAN	Spanish-American Novel I
	Special Topics: Hamlet and its After		Independent Study in Spanish
HIST	Roots of the Modern World	S ED	Assessment and Planning for Young Children
	Nazi Germany and the Holocaust	UNIV	Living Responsibly in an Interdependent World
MATH	Theory of Numbers		
MUSC	History of Music I		

Spring 2014

ART	History of Art II	MUSC	History of Music II
	Art in the Modern Era	PHIL	Modern Philosophy
ENGL	Introduction to World Literature	PSYC	Developmental Psychology
HIST	Global History of the Twentieth Century	R ST	Foundations of Christian Morality

Enrollment in Honors Courses

Fall 2009	Fall 2010	Fall 2011	Fall 2012	Fall 2013
138	138	83	85	98

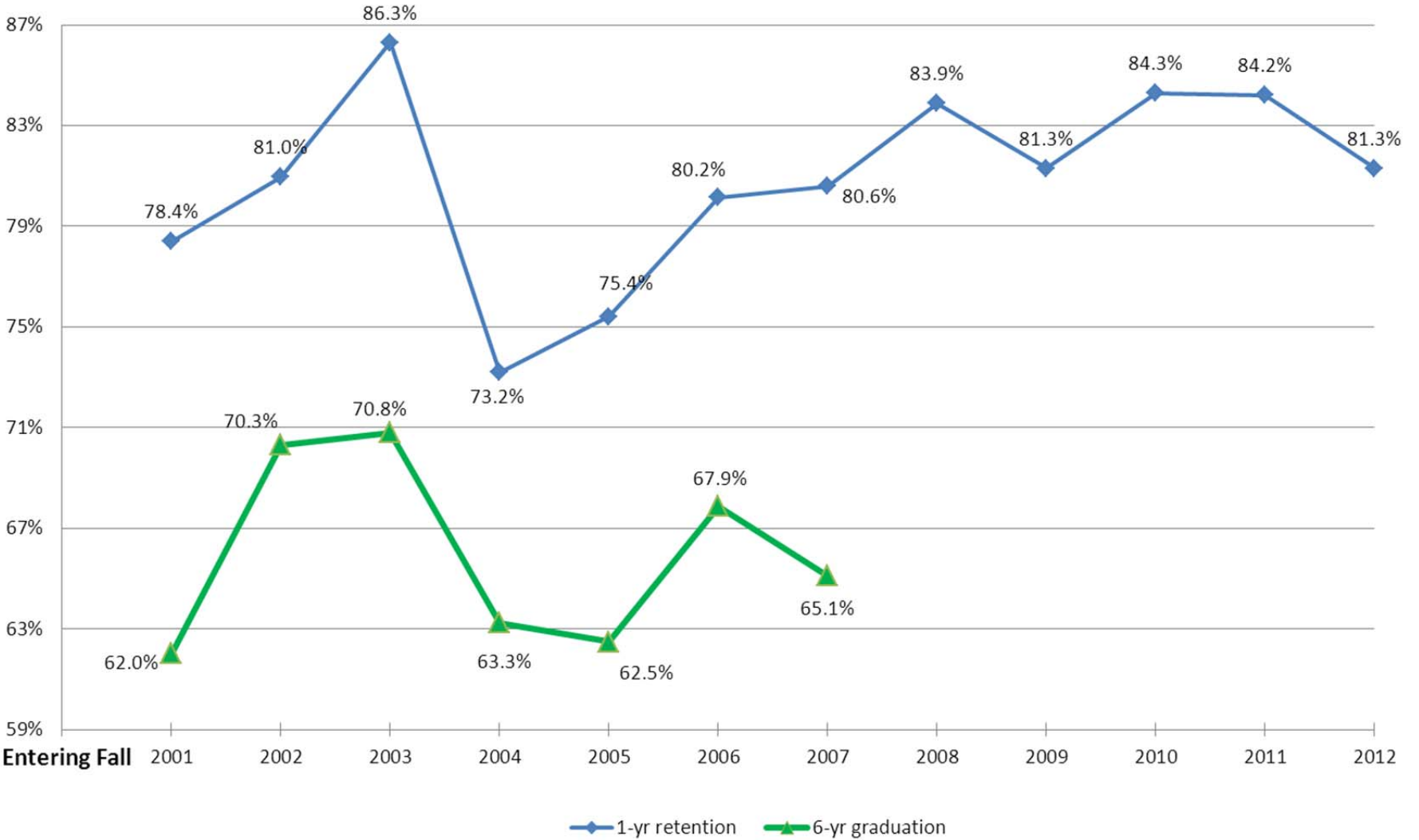
Retention and Graduation Rates for First-Time Full-Time Freshmen by Year of Entry - Fall 2001 to Fall 2013

Entering Fall Term	Retention Rates									Graduation Rates			
	1st Fall	2nd Fall	3rd Fall	4th Fall	5th Fall	6th Fall	7th Fall	8th Fall	within 4 yrs	within 5 yrs	within 6 yrs	within 7 yrs	
2001 N	287	225	200	191	78	9	2	1	114	170	178	180	
% enrollment	100%	78.4%	69.7%	66.6%	27.2%	3.1%	0.7%	0.3%	39.7%	59.2%	62.0%	62.7%	
2002 N	310	251	225	225	58	7	2	0	166	213	218	222	
% enrollment	100%	81.0%	72.6%	72.6%	18.7%	2.3%	0.6%	0.0%	53.5%	68.7%	70.3%	71.6%	
2003* N	277	239	210	203	45	6	0	0	152	188	196	199	
% enrollment	100%	86.3%	75.8%	73.3%	16.2%	2.2%	0.0%	0.0%	54.9%	67.9%	70.8%	71.8%	
2004 N	332	243	221	216	61	11	2	2	149	200	210	211	
% enrollment	100%	73.2%	66.6%	65.1%	18.4%	3.3%	0.6%	0.6%	44.9%	60.2%	63.3%	63.6%	
2005* N	301	227	201	193	33	3	0	0	153	184	188	190	
% enrollment	100%	75.4%	66.8%	64.1%	11.0%	1.0%	0.0%	0.0%	50.8%	61.1%	62.5%	63.1%	
2006* N	383	307	285	270	67	9	5	3	197	254	260	265	
% enrollment	100%	80.2%	74.4%	70.5%	17.5%	2.3%	1.3%	0.8%	51.4%	66.3%	67.9%	69.2%	
2007* N	407	328	283	274	48	5	4		218	261	265		
% enrollment	100%	80.6%	69.5%	67.3%	11.8%	1.2%	1.0%		53.6%	64.1%	65.1%		
2008 N	422	354	306	296	51	6			238	284			
% enrollment	100%	83.9%	72.5%	70.1%	12.1%	1.4%			56.4%	67.3%			
2009* N	412	335	296	295	60				232				
% enrollment	100%	81.3%	72.3%	71.6%	14.6%				56.3%				
2010* N	451	380	348	311					5				
% enrollment	100%	84.3%	77.2%	69.1%					1.1%				
2011 N	456	384	336						1				
% enrollment	100%	84.2%	73.7%						0.2%				
2012 N	454	369											
% enrollment	100%	81.3%											
2013 N	405												
% enrollment	100%												

NOTE: Average 6-year graduation rate computed by Student Right to Know (SRK) formula for 4-year programs is 64.9%

*Student(s) removed from cohort

Trends in 1-Year Retention and 6-year Graduation Rates of First-year Full-time Freshmen Fall 2001 to Fall 2012 Cohorts



ATHLETICS AND RECREATION

Intercollegiate teams are sponsored in seventeen sports. The university is a member of the National Collegiate Athletic Association (NCAA) Division III, the Colonial States Athletic Conference (CSAC), the Eastern College Athletic Conference (ECAC) and the Landmark Conference. Ten sports are offered for women and nine for men:

Women	Men
Basketball	Baseball
Cross Country	Basketball
Field Hockey	Cross Country
Lacrosse	Golf
Soccer	Lacrosse
Softball	Soccer
Swimming/Diving	Swimming/Diving
Tennis	Tennis
Track and Field (Outdoor)*	Track and Field (Outdoor)*
Volleyball	

*As of fall 2014

A selection of intramural and club sports also is available. Club sports include: climbing, dance team, cheerleading and men's volleyball among others. A wide range of activities are offered through the intramural sports program. Traditional team activities such as basketball, volleyball, flag football, tennis and softball are available in addition to innovative programs like ultimate Frisbee and kickboard water polo. Recreation programs include land and water aerobics classes and fitness challenges.

The Center for Athletics and Wellness that opened in 2006 is a state-of-the-art facility with a fitness center, climbing wall, an elevated running track, a dance/aerobics studio, a 1500 seat arena and high tech athletic training areas. The new Aquatics Center, completed in 2011, features eight lanes, one meter and three meter diving boards, spectator seating and team rooms. This major expansion of the university's athletics and recreation facilities was designed to complement the outdoor facilities that include a lighted multipurpose turf field, tennis courts, sand volleyball court, basketball courts and three grass fields.

Athletic Honors/Achievements (2004-2013) - Team

ECAC South Region Championship	1	All Conference Team Members	
CSAC Overall President's Cup	1	First Team	316
CSAC Men's President's Cup	1	Second Team	276
CSAC Women's Presidents Cup	3	Honorable Mention	160
Team Conference Championships	32	All Sportsmanship Team	127
Team Conference Runners-up	28		
Conference Coach of the Year	41		

Athletic Honors/Achievements (2002-2012) - Individual

Women's Soccer Conference Player of the Year	2002, 2008, 2009, 2012
Men's Soccer Rookie of the Year	2012
Women's Cross Country Conference Individual Champion	2004, 2006, 2010, 2012, 2013
Men's Tennis Conference Player of the Year	2008, 2012
Women's Lacrosse Player of the Year	2012
Women's Tennis Rookie of the Year	2011-2012
Men's Soccer Player of the Year	2011-2012

II. PERSONNEL

Employees by Ethnicity, EEO Category and Time Status

EEO-6 CATEGORY		09-10	10-11	11-12	12-13	13-14
<u>Executive/Administrative/Managerial</u>						
Full-Time	White	41	46	44	46	44
	Other	2	0	3	2	1
Part-Time	White	1	0	0	0	1
<u>Faculty (instructional only)</u>						
Full-Time	White	133.25	137.25	132	142	144
	Other	12	14	21	15	15
Part-Time	White	222	237	231	265	253
	Other	18	11	57	20	20
<u>Professional (includes librarians)</u>						
Full-Time	White	115	114.5	108	122	124
	Other	5	8	9	5	6
Part-Time	White	28	36	27	28	35
	Other	0	2	3	6	5
<u>Secretarial/Clerical</u>						
Full-Time	White	97	97	103	98	94
	Other	3	2	1	1	1
Part-Time	White	24	26	18	19	20
	Other	4	3	5	2	1
<u>Technical/Paraprofessional</u>						
Full-Time	White	21	18	20	22	21
	Other	1	1	1	0	1
Part-Time	White	5	5	5	2	4
	Other	0	0	0	0	0
<u>Skilled Craft</u>						
Full-Time	White	22	20	22	21	21
<u>Service/Maintenance</u>						
Full-Time	White	82	79	81	85	85
	Other	0	1	4	1	2
Part-Time	White	12	16	8	10	9
	Other	1	1	2	1	1
Total						
Full-Time	White	511.25	511.75	510	536	533
	Other	23	26	39	24	26
Part-Time	White	292	320	289	324	322
	Other	23	17	67	29	27

Full-time Employees by Gender and Ethnicity

EEO-6 CATEGORY	09-10		10-11		11-12		12-13		13-14	
	M	F	M	F	M	F	M	F	M	F
<u>Executive/Administrative/Managerial</u>										
White	21	20	22	24	20	24	21	25	19	25
Black	0	0	0	0	0	1	0	1	0	1
Amer Ind/Alaskan Native	0	1	0	0	0	0	0	0	0	0
Other	1	0	0	0	1	1	1	0	0	0
<u>Faculty (instructional only)</u>										
White	57.5	75.75	57	80.25	63	69	61	81	63	81
Black	2	1	2	1	1	1	1	1	2	1
Hispanic	2	1	1	2	1	2	1	2	2	0
Asian/Pacific Islander	4	2	5	3	6	3	5	4	4	5
Other	0	0	0	0	2	5	1	0	0	1
<u>Professional (includes librarians)</u>										
White	25	90	31	83.5	31	77	37	85	38	86
Black	0	1	1	1	0	1	0	1	0	1
Hispanic	0	0	0	1	0	1	0	1	0	1
Asian/Pacific Islander	1	3	1	4	1	2	1	2	1	2
Other	0	0	0	0	2	2	0	0	1	0
<u>Secretarial/Clerical</u>										
White	5	92	4	93	3	100	3	95	4	90
Black	0	2	0	2	0	0	0	0	0	0
Hispanic	0	1	0	0	0	0	0	0	0	0
Other	0	0	0	0	0	1	0	1	0	1
<u>Technical/Paraprofessional</u>										
White	11	10	10	8	12	8	14	8	13	8
Hispanic	0	1	0	1	0	1	0	0	0	0
<u>Skilled Craft</u>										
White	22	0	20	0	22	0	21	0	21	0
<u>Service/Maintenance</u>										
White	43	39	38	41	39	42	40	45	38	47
Black	0	0	1	0	0	1	0	1	0	0
Other	0	0	0	0	2	1	0	0	1	1
Total										
White	184.5	326.75	182	329.75	190	320	197	339	196	337
Black	2	4	4	4	1	4	1	4	2	3
Hispanic	2	3	1	4	1	4	1	3	2	1
Asian/Pacific Islander	5	5	6	7	7	5	6	6	5	8
Amer Ind/Alaskan Native	0	1	0	0	0	0	0	0	0	0
Other	1	0	0	0	7	10	2	1	2	3
	194.5	339.75	193	344.75	206	343	207	353	207	352

Number of Full-time and Pro-rata Faculty by College³²

	2009	2010	2011	2012	2013
Reap College of Education and Human Development					
Full-time	29	29	32	32	36
Pro-rata	2	2	1	1	0
FTE	30	30	32.75	32.75	36.0
Insalaco College of Creative and Performing Arts					
Full-time	24	25	26	28	27
Pro-rata	8	5	6	5	8
FTE	28	27.5	29	30.5	31.0
College of Health and Human Services					
Full-time	33	37	40	39	35
Pro-rata	4	5	8	7	7
FTE	35	39.5	44	42.5	39.5
College of Liberal Arts and Sciences					
Full-time	45	46	49	50	51
Pro-rata	6	6	4	4	7
FTE	48	49	51	52	54.5
School of Architecture					
Full-time	3	5	6	8	10
Pro-rata	0	0	0	1	1
FTE	3	5	6	8.5	10.5
Librarians					
Full-time	8	7	5	8	8
Pro-rata	0	1	0	0	0
FTE	8	7.5	5	8	8
TOTAL					
Full-time	142	149	158	165	167
Pro-rata	20	19	19	18	23
FTE	152	158.5	167.75	174.25	178.5

Tenure Status Among Full-time Faculty

	2009		2010		2011		2012		2013	
	N	%	N	%	N	%	N	%	N	%
Professor	25	100.0	22	100.0	23	100.0	23	100.0	22	95.7
Assoc Professor	31	73.8	28	68.3	34	75.6	35	72.9	39	76.5
Asst Professor	5	15.6	6	9.1	5	6.8	4	4.9	4	5.3
Instructor	0	0.0	0	0.0	0	0.0	0	0.0	0	0.0
Total University	61	43.7	56	37.3	62	40.0	62	37.6	65	40.1

³² Center for Interdisciplinary Studies: Faculty from other colleges teach CIS courses.

Number of Full-time Faculty by Rank and Gender

	<u>2009</u>	<u>2010</u>	<u>2011</u>	<u>2012</u>	<u>2013</u>	
Professor						
Male	14	12	13	11	13	
Female	11	10	10	12	10	
Total	25	22	23	23	23	(13.77%)
Associate Prof.						
Male	16	17	19	22	23	
Female	26	23	26	26	27	
Total	42	40	45	48	50	(29.94%)
Assistant Prof.						
Male	31	34	42	38	35	
Female	28	31	35	43	40	
Total	59	65	77	81	75	(44.91%)
Instructor						
Male	2	2	0	0	1	
Female	10	12	2	3	2	
Total	12	14	2	3	3	(1.80%)
Clinical Instructor						
Male	0	0	0	0	1	
Female	4	8	11	10	15	
Total	4	8	11	10	16	(9.58%)
Total Full-time	142	149	158	165	167	

Number of Full-time Faculty with Terminal Degrees

	2009		2010		2011		2012		2013	
	<u>N</u>	<u>%</u>	<u>N</u>	<u>%</u>	<u>N</u>	<u>%</u>	<u>N</u>	<u>%</u>	<u>N</u>	<u>%</u>
Doctorate	99	69.7	100	67.1	121	76.6	119	72.1	116	69.0
MSLS/MLIS	8	5.6	7	4.7	5	3.2	8	4.9	8	4.8
MFA/MPhys Asst/ MArch	12	8.5	15	10.1	17	10.8	21	12.7	22	13.1
JD/MD/AuD	2	1.4	1	0.7	0	0.0	0	0.0	2	1.2
Total University	121	85.2	123	82.6	143	90.5	148	89.7	148	89.7

III. FINANCES

Unrestricted Operating Revenues

	FY 10-11	FY 11-12	FY 12-13
Tuition and fees:			
Tuition:			
Undergraduate School - On Campus	\$55,012,880	\$57,630,432	\$60,066,496
Undergraduate - OCDP	62,400	34,009	100,750
Graduate School of Arts & Sciences	10,587,656	11,100,886	12,714,920
Graduate School of Social Work	4,701,231	4,533,660	2,469,025
Total Tuition	70,364,167	73,298,987	75,351,191
Less Scholarship Allowances	-29,266,163	-30,911,661	-32,144,966
Net Tuition	\$41,098,004	\$42,387,326	\$43,206,225
Fees:			
Registration and Application	88,035	85,870	95,016
General	2,540,112	2,521,163	2,813,770
Music Lessons	158,462	147,169	6,050
Student Teaching	2,460	11,550	3,210
Graduation	195,075	212,000	199,900
Orientation	156,133	148,651	178,962
Student Activities Fees	457,801	457,991	547,938
Non-credit Offerings	393,590	470,976	495,686
Miscellaneous	937,957	1,258,852	1,426,681
Total Fees	\$4,934,625	\$5,314,222	\$5,767,213
Total Tuition and Fees (Net)	\$46,938,129	\$47,701,548	\$48,973,438
Federal Grants and Contracts	\$1,029,385	\$864,905	\$775,529
State Grants and Contracts	2,411,037	795,567	919,471
Private Gifts and Grants	830,894	1,225,586	1,130,483
Income on Long-Term Investments	526,202	5,274	7,333
Other Investment Income	167,184	158,012	30,306
Net Unrealized and Realized Gains on Long-Term Investments	-1,108,523	574,003	285,833
Sales and Services of Educational Activities	314,726	322,140	294,240
Contributed Services, Net	0	0	0
Other Sources	551,442	868,569	857,529
	\$4,722,347	\$4,814,056	\$4,300,724
Sales and Services of Auxiliary Enterprises:			
Food Service	\$5,322,364	\$5,852,886	\$5,617,799
Resident Halls	7,435,199	7,957,875	7,731,313
Bookstore	1,168,490	209,977	75,555
Fricchione Day Care Center	565,014	542,750	598,548
Total Sales and Services of Auxiliary Enterprises	\$14,491,067	\$14,563,488	\$14,023,215
Total Net Assets Released From Restrictions	2,824,083	3,134,955	4,545,621
Total Current Revenues	\$68,070,124	\$70,214,047	\$71,842,998

Percent Distribution of Unrestricted Operating Revenues

	FY 10-11 % of Total	FY 11-12 % of Total	FY 12-13 % of Total
Tuition and fees:			
Tuition:			
Undergraduate School - On Campus	80.8	82.1	83.6
Undergraduate - OCDP	0.1	0.0	0.1
Graduate School of Arts & Sciences	15.6	15.8	17.7
Graduate School of Social Work	6.9	6.5	3.4
Total Tuition	103.4	104.4	104.9
Less Scholarship Allowances	-43.0	-44.0	-44.7
Net Tuition	60.4	60.4	60.1
Fees:			
Registration and application	0.1	0.1	0.1
General	3.7	3.6	3.9
Music lessons	0.2	0.2	0.0
Student teaching	0.0	0.0	0.0
Graduation	0.3	0.3	0.3
Orientation	0.2	0.2	0.2
Student Activities Fees	0.7	0.7	0.8
Non-credit offerings	0.6	0.7	0.7
Miscellaneous	1.4	1.8	2.0
Total Fees	7.2	7.6	8.0
Total Tuition and Fees (Net)	67.6	67.9	68.2
Federal Grants and Contracts	1.5	1.2	1.1
State Grants and Contracts	3.5	1.1	1.3
Private Gifts and Grants	1.2	1.7	1.6
Income on Long-Term Investments	0.8	0.0	0.0
Other Investment Income	0.2	0.2	0.0
Net Unrealized and Realized Gains on Long-Term Investments	-1.6	0.8	0.4
Sales and Services of Educational Activities	0.4	0.5	0.4
Contributed Services, Net	0.0	0.0	0.0
Other Sources	0.8	1.2	1.2
	6.8	6.9	6.0
Sales and Services of Auxiliary Enterprises:			
Food service	7.8	8.3	7.8
Resident halls	10.9	11.3	10.8
Bookstore	1.7	0.3	0.1
Fricchione Day Care Center	0.8	0.8	0.8
Total Sales and Services of Auxiliary Enterprises	21.3	20.7	19.5
Total Net Assets Released From Restrictions	4.1	4.5	6.3
Total Current Revenues	100.0	100.0	100.0

Unrestricted Operating Expenditures

	FY 10-11	FY 11-12	FY 12-13
Educational and General:			
Instruction	\$24,117,752	\$27,108,806	\$27,705,032
Research	264,944	335,075	344,749
Academic Support	7,393,454	6,609,601	6,370,506
Student Services	9,951,461	10,142,741	10,262,375
Institutional Support	12,693,535	13,611,540	14,376,542
Student Aid	389,081	471,228	532,056
Educational and General Expenditures	\$54,810,227	\$58,278,991	\$59,591,260
Auxiliary Enterprises	11,089,059	10,438,214	10,500,351
Total Expenditures	\$65,899,286	\$68,717,205	\$70,091,611

Percent Distribution of Unrestricted Operating Expenditures

	FY 10-11 % of Total	FY 11-12 % of Total	FY 12-13 % of Total
Educational and General:			
Instruction	36.6	39.4	39.5
Research	0.4	0.5	0.5
Academic Support	11.2	9.6	9.1
Student Services	15.1	14.8	14.6
Institutional Support	19.6	19.8	20.5
Student Aid	0.6	0.7	0.8
Educational and General Expenditures	83.2	84.8	85.0
Auxiliary Enterprises	16.8	15.2	15.0
Total Expenditures	100.0	100.0	100.0

**Externally Sponsored Research
as a Percentage of
Unrestricted Operating Expenditures**

	<u>FY 10-11</u>	<u>FY 11-12</u>	<u>FY 12-13</u>
Total Unrestricted Operating Expenditures	\$65,899,286	\$68,717,205	\$70,091,611
Externally Sponsored Research Expenditures	264,944	\$471,228	\$532,056
Research Support as Percent of Total	0.40%	0.69%	0.76%

Endowment, Quasi-Endowment and Other Long-Term Investments

	<u>2010-11</u>	<u>2011-12</u>	<u>2012-13</u>
Endowment and Similar Funds:			
Quasi-Endowment, income designated for Graduate School of Arts and Sciences	\$465,451	\$465,451	\$465,451
Quasi-Endowment, income designated for scholarship aid	501,312	514,097	522,002
Quasi-Endowment, income not designated	19,731,095	23,282,240	21,491,366
Total Quasi-Endowment	<u>\$20,697,858</u>	<u>\$24,261,788</u>	<u>22,478,819</u>
Life Income Trust	28,863	18,779	18,175
Endowment	<u>17,364,785</u>	<u>18,423,008</u>	<u>19,531,461</u>
Total Endowment and Similar Funds	\$38,091,506	\$42,703,575	\$42,028,455
Other Long-Term Investments:			
Beneficial Interest in Perpetual Trusts	1,001,524	952,698	997,193
For matching funds under Federal Student Loan Program	243,862	338,405	419,411
Other	<u>859,953</u>	<u>534,227</u>	<u>545,738</u>
Total Other Long-Term Investments	<u>\$2,105,339</u>	<u>\$1,825,330</u>	<u>\$1,962,342</u>
Total Long-Term Investments	<u>\$40,196,845</u>	<u>\$44,528,905</u>	<u>\$43,990,797</u>

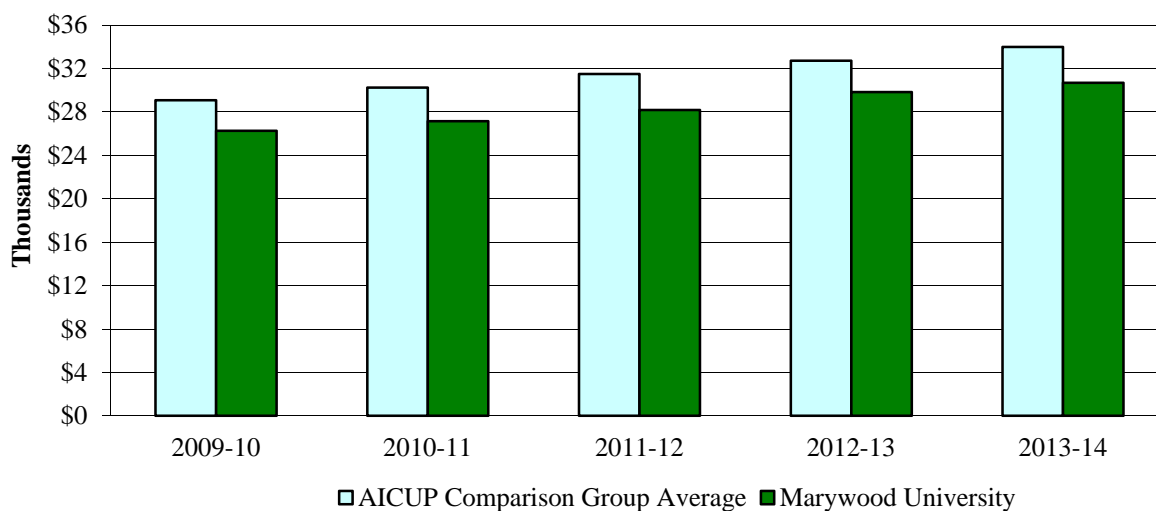
Tuition, Fees, Room and Board Charges

	<u>FY 09-10</u>	<u>FY 10-11</u>	<u>FY 11-12</u>	<u>FY 12-13</u>	<u>FY 13-14</u>
<u>Tuition Rates Per Credit</u>					
<i>Undergraduate</i>	\$575	\$590	\$600	\$630	\$630
<i>Distance Learning</i>	460	470	478	500	500
<i>Masters Level</i>	715	735	750	775	775
<i>Master of Fine Arts</i>	715	735	750	775	775
<i>Master of Social Work</i>	715	735	750	775	775
<i>Master of Public Administration</i>	715	735	750	775	775
<i>Master of Social Work (off-campus)</i>	715	735	750	775	775
<i>Master of Social Work (Bloomsburg Program)</i>	575	590	600	630	630
<i>Doctoral Level</i>	810	830	840	870	870
<i>Ph.D. (Hershey)</i>	840	860	870	870	870
<u>General Fee Per Year</u>					
<i>Full-Time</i>	\$920	\$950	\$975	\$1,050	\$1,100
<i>Part-Time</i>	370	400	425	500	550
<u>Student Activities Fee Per Year</u>					
<i>UG - Full-Time</i>	\$200	\$200	\$200	\$250	\$250
<i>UG - Part-Time</i>	100	100	100	150	150
<i>GR – Full- & Part-Time</i>	40	40	40	40	40
<u>Registration Fee Per Year</u>					
	\$100	\$100	\$100	\$100	\$100
<u>Room & Meals Per Year</u>					
<i>Double Room and 24 Meals/Week-\$100 PP</i>	\$11,728	\$12,172	\$12,520	\$12,920	\$13,566
<i>Double Room and 19 Meals/Week-\$200 PP</i>	11,498	12,172	12,520	12,920	13,566
<i>Double Room and 15 Meals/Week-\$300 PP</i>	11,498	12,172	12,520	12,920	13,566
<i>Double Room and 185 Block Plan-\$100 PP</i>	11,498	11,934	12,270	12,650	13,282
<i>Double Room and 150 Block Plan-\$100 PP</i>	10,826	11,238	11,550	11,670	12,254
<i>Single Room Fee (additional charge)</i>	1,414	1,552	1,584	1,630	1,710
<u>Other Major Fees</u>					
<i>New Student Matriculation Fee</i>	\$225	\$225	\$225	\$225	\$250
<i>Graduation Fee</i>	225	225	225	225	250
<i>Music Lessons (per half hour per credit charge in addition to tuition)</i>	395	395	395	395	395
<u>Undergraduate Cost of Attendance</u>					
<i>Tuition for Full-Time Students</i>	\$25,150	\$26,000	\$27,000	\$28,080	\$29,340
<i>Room & Meals (19 meals)</i>	11,498	12,172	12,520	12,920	13,566
<i>General Fee</i>	920	950	975	1,050	1,100
<i>Student Activities Fee</i>	200	200	200	250	250
Total Cost Per Year	\$37,768	\$39,322	\$40,695	\$42,300	\$44,256

**Total Cost for Tuition & Required Fees and Room and Board
Marywood University and AICUP Peer Institutions**

	2011-12 \$	2012-13 \$	2013-14 \$	most recent increase %
<u>Tuition and Fees</u>				
Marywood University	28,175	29,830	30,690	4.5
Arcadia University	34,150	35,620	36,810	3.3
Gannon University	25,522	26,526	27,546	3.8
Immaculata University	28,850	29,000	30,740	6.0
King's College	27,680	29,174	30,310	3.9
La Roche College	23,160	24,058	24,778	3.0
La Salle University	35,140	36,550	38,100	4.2
Misericordia University	25,990	27,230	28,210	3.6
St. Francis University	27,808	28,878	29,992	3.9
St. Joseph's University	36,640	37,830	39,040	3.2
Susquehanna University	35,860	37,280	38,780	4.0
University of Scranton	36,042	37,456	38,754	3.5
Villanova University	41,110	42,740	44,430	4.0
Widener University	34,762	36,382	38,028	4.5
Wilkes University	28,210	29,326	30,350	3.5
<u>Room & Board</u>				
Marywood University	12,520	12,920	13,566	5.0
Arcadia University	11,640	12,150	12,560	3.4
Gannon University	10,230	10,580	10,940	3.4
Immaculata University	11,460	11,740	12,260	4.4
King's College	10,470	11,020	11,368	3.2
La Roche College	9,182	9,732	10,024	3.0
La Salle University	12,010	12,510	13,420	7.3
Misericordia University	10,760	11,190	11,630	3.9
St. Francis University	9,520	9,900	10,346	4.5
St. Joseph's University	12,206	12,800	13,232	3.4
Susquehanna University	9,600	10,000	10,390	3.9
University of Scranton	12,432	12,804	13,186	3.0
Villanova University	10,960	11,393	11,856	4.1
Widener University	11,896	12,248	12,340	0.8
Wilkes University	11,698	12,034	12,436	3.3

Tuition and Fees: AICUP Comparison Group Average v. Marywood University



Student Financial Aid

Funding Source	FY 08-09	FY 09-10	FY 10-11	FY 11-12	FY 12-13
Institutional Aid					
Marywood University	\$23,631,961	\$26,318,023	\$28,811,004	\$30,758,668	\$32,152,485
Endowments	47,730	50,380	38,650	35,250	30,435
Institutional Aid	\$23,679,691	\$26,368,403	\$28,849,654	\$30,793,918	\$32,182,920
Federal, State, and Private Aid					
Federal	\$2,654,429	\$3,736,795	\$3,990,402	\$3,725,685	\$3,591,596
State	2,534,390	2,525,943	2,511,828	2,922,519	2,994,050
Private	192,645	129,137	74,280	84,275	100,890
Federal, State and Private Aid	\$5,381,464	\$6,391,875	\$6,576,510	\$6,732,479	\$6,686,536
Grand Total	\$29,061,155	\$32,760,278	\$35,426,164	\$37,526,397	\$38,869,456

For comparability, Pell and PHEAA grants (listed below) are included in the above federal and state sources, respectively. These amounts are excluded from the audited financial statements.

Pell Grants	\$1,959,345	\$2,995,400	\$3,290,094	\$3,230,090	\$3,053,903
PHEAA Grants	\$2,428,375	\$2,806,468	\$2,480,826	\$2,913,418	\$2,964,062

Total Gifts and Grants (Fiscal Gifts)

<u>Source</u>	<u>FY '09 Amount</u>	<u>FY '10 Amount</u>	<u>FY '11 Amount</u>	<u>FY '12 Amount</u>	<u>FY '13 Amount</u>	<u>Five Year Amount</u>
Alumni	\$890,149	\$587,763	\$625,042	\$955,392	\$755,467	\$3,813,813
Foundations/Corporations	1,189,118	1,365,504	1,510,853	1,516,379	1,333,630	6,915,484
Friends	922,478	1,181,142	1,293,190	438,203	3,754,835	7,589,848
Parents	43,616	37,659	38,310	38,863	38,957	197,405
Sub-total	<u>\$3,045,361</u>	<u>\$ 3,172,068</u>	<u>\$3,467,395</u>	<u>\$2,948,837</u>	<u>\$5,882,889</u>	<u>\$18,516,550</u>
Sisters, Servants of the Immaculate Heart of Mary						
I.H.M. Scholarship Gift	\$250,000	\$225,000	\$200,000	\$183,933	\$227,168	\$1,086,101
Competitive Government Grants and Contracts	1,583,218	648,319	398,163	1,650,378	1,740,182	6,020,260
Sub-total	<u>\$1,833,218</u>	<u>\$873,319</u>	<u>\$598,163</u>	<u>\$1,834,311</u>	<u>\$1,967,350</u>	<u>\$7,106,361</u>
Grand Total	<u>\$4,878,579</u>	<u>\$4,045,387</u>	<u>\$4,065,558</u>	<u>\$4,783,148</u>	<u>\$7,850,239</u>	<u>\$25,622,911</u>

Overall Alumni Giving Fiscal Years 2009 – 2013

Fiscal Year	Number of Donors	% Participation	Total Giving	Average Gift
2009	4,134	16.2	890,149	215.32
2010	3,913	15.1	587,763	150.21
2011	3,385	12.7	625,042	184.65
2012	3,136	11.8	955,392	304.65
2013	3,622	13.1	755,467	208.58

Undergraduate Alumni Giving Fiscal Years 2009 – 2013

Fiscal Year	Number of Donors	% Participation	Total Giving	Average Gift
2009	3,454	20.4	879,845	254.73
2010	3,255	18.8	527,379	162.02
2011	3,051	17.3	574,531	188.31
2012	3,038	17.3	897,043	295.27
2013	3,025	16.6	684,876	226.41

Office of Research and Sponsored Programs

Academic Affairs Research and Program Grants and Contracts (Public and Private Funds)

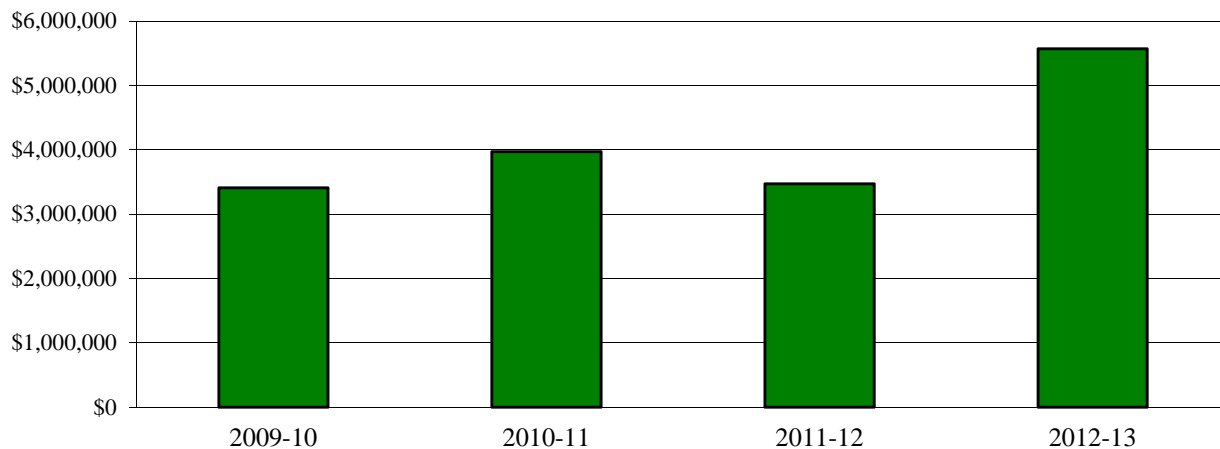
FY 2007-08	\$1,920,238	FY 2010-11	\$1,457,680
FY 2008-09	\$2,218,130	FY 2011-12	\$1,596,452
FY 2009-10	\$1,333,016	FY 2012-13	\$1,784,308

Gift* Levels by Campaign Year Giving by Gift Size

Current Operations	2009-10		2010-11		2011-12		2012-13	
	N	\$	N	\$	N	\$	N	\$
\$5,000	37	1,037,443	25	877,688	28	649,994	33	3,720,468
\$2,500-4,999	34	89,853	39	128,865	32	104,365	31	91,169
\$1,000-2,499	124	141,967	105	145,123	119	174,760	92	140,149
\$250-999	377	143,191	367	144,434	298	115,035	308	127,030
\$100-249	1015	120,969	1,008	126,192	836	102,296	924	114,424
\$1-99	2,371	81,190	2,351	81,629	2,163	73,144	1,950	67,622
Totals	3,958	1,614,613	3,895	1,503,931	3,476	1,219,594	3,338	4,260,862
Capital and Endowment								
\$5,000	48	1,595,727	48	2,029,434	41	1,758,076	53	1,701,929
\$2,500-4,999	21	54,754	15	40,081	16	56,046	13	38,907
\$1,000-2,499	68	85,529	38	51,446	42	62,021	41	61,041
\$250-999	71	26,901	51	24,035	50	19,842	48	20,660
\$100-249	136	16,790	109	14,033	106	13,494	169	20,687
\$1-99	79	2,755	109	4,436	78	3,697	149	5,971
Totals	423	1,782,456	370	2,163,465	333	1,913,176	473	1,849,195
Total Giving by Year								
Current Operations & Capital and Endowment	4,381	3,397,069	4,265	3,667,396	3,809	3,132,770	3,811	6,110,057
Presidential Society	230	3,408,491	220	3,971,372	226	3,469,720	222	5,569,295

* Does not include Competitive Government Grants and Contracts

Total Presidential Society Giving



IV. FACILITIES

Land and Building Inventory

Land (In Acres):

	<u>June 30, 2009</u>	<u>June 30, 2010</u>	<u>June 30, 2011</u>	<u>June 30, 2012</u>	<u>June 30, 2013</u>
Land in Scranton, PA	70.0	70.3	71.3	71.3	71.3
Land in Dunmore, PA	43.4	43.4	51.4	51.4	51.4
Total	113.4	113.7	122.7	122.7	122.7

Buildings:

<u>Building</u>	<u>Predominant Function</u>	<u>Usable Square Footage</u>
Adams Avenue Property (#2205)	President's Residence	5,555
Adams Avenue Property (#2305)	Administrative	2,924
Adams Avenue Property (#2349)	Student Life Residence	2,857
Bethany Hall and Garage	Student Residence	4,966
Center for Architectural Studies	Academic	25,424
Center For Natural and Health Sciences	Academic	45,453
Domiano Early Childhood Center	Special	2,810
Emmanuel Hall	Student Residence	8,359
Fricchione Day Care Center	Special	8,397
Immaculata Hall	Administration/Student Residence	31,994
Insalaco Center for Studio Arts	Academic	56,020
Keith J. O'Neill Center for Healthy Families	Academic/Special	24,828
Learning Resources Center	Library	66,169
Liberal Arts Center	Academic/Administrative	70,255
Loughran Hall	Student Residence/Administrative	109,247
Madonna Hall	Student Residence	51,674
Maria Hall	Administrative	5,020
McCarty Hall	Student Residence	4,921
McGowan Center for Graduate and Professional Studies	Academic	55,252
North Washington Avenue Property (#2501)	Residence	3,421
Perpetual Help Hall	Student Residence	3,574
Power Plant and Maintenance Building	Support	19,924
Printing and Mailing Center	Support	3,674
Regina Hall	Student Residence/Administrative	56,907
Robert J. Mellow Center	Academic/Athletics/Recreation	80,170
Sette La Verghetta Center for Performing Arts	Academic	39,769
Shields Visual Arts Center	Academic	56,707
South Campus	Academic/Administrative	142,666
Student Center (Nazareth Hall)	Campus Life	55,942
Washington Avenue Property (#2400)	IHM Residence	3,182
Woodland Residences I	Student Residences	10,442
Woodland Residences II	Student Residences	27,463
Woodland Residences III	Student Residences	14,617
Total Square Footage		1,100,583
Net Book Value of Buildings (historical cost less accumulated depreciation)		\$130,865,406
Cost of Replacement		\$239,479,320

Leased facilities:

DeSales University - School of Social Work

University Library

	<u>2010-11</u>	<u>2011-12</u>	<u>2012-13</u>
<u>Resources</u>			
<i>Print Collection</i>			
Books and Bound Periodicals	222,033	204,708	195,420
Books Added	2,261	1,870	1,944
Print Journal Titles	411	77	107
Distinct Journal Titles (Electronic and Print)	29,756	34,057	35,169
Microfiche	364,677	364,677	0
Reels of Microfilm	13,567	13,582	0
<i>Media Collection</i>			
Art Prints	337	337	337
Audiotapes	2,791	0	0
Compact Discs	7,434	7,476	7,795
Computer Software	16	16	16
DVDs	4,174	4,262	4,335
Records	5,271	5,216	5,414
Slides	10,268	10,268	10,268
Sound Slidesets	14	14	14
Study Prints	418	418	418
Videorecordings	6,571	6,572	6,572
<i>Electronic Resources</i>			
Internet Databases	52	52	57
Full-Text Databases	51	48	46
<u>Expenditures</u>			
Books and Periodicals	\$204,151	\$219,591	\$231,210
Electronic Resources	134,984	103,334	\$111,354
Bindings	6,452	5,437	\$4,472
Non-Print Media	15,434	4,970	\$2,600
Supplies	7,923	9,937	\$4,615
<i>Interlibrary Loan</i>			
Borrowed	3,108	3,856	5,165
Loaned	4,816	4,329	4,532
<i>Staff</i>			
Professionals	8.5	8.0	8.0
Clerical	12.7	12.7	9.5
Student Assistants	23	23	20
Circulation – Total	21,146	21,452	18,905
Hours of Service/Week	92.5	98.5	98.5
Reference Transactions in a Typical Week	169	73	68
Gate Count in a Typical Week	4,450	4,489	N/A
No. of Presentations, Workshops, Etc.	181	170	156
No. of Students, Faculty Attending	2,320	2,702	2,079

Office of Information Technology

The Office of Information Technology (OIT) is responsible for providing technology and related support to the Marywood University campus. This central organization of all IT resources on campus is made up of four divisions: User Support Services, Application Programming Services, Network & Systems Administration Services, and Web Development.

User Support Services

User Support Services provides Help Desk, Academic Computing and Training support. The Help Desk provides first level hardware, software, and network support to faculty, staff and students. A public walk-up window is housed on the main floor of the Library.

Academic computing staff assist faculty in the use of information technology for the creation, organization, analysis, and presentation of scholarly, scientific, and curricular resources. In courses using our learning management system (Moodle), syllabi, course information, chat, assignment, and test capabilities are all available online.

One-on-one and group training is conducted by various User Support staff members on applications such as Microsoft Office, Google Apps, SPSS, Moodle, and other specialized packages such as Colleague and the MarywoodYOU Portal.

User Support also employs lab supervisors and student lab assistants who troubleshoot basic problems and maintain the computer labs located throughout campus.

Application Programming Services

Application Programming Services supports administrators and staff in management and student services, and gives ongoing technical and staff support for effective data and process operations. This includes programming for over 5,000 applications that manage the University's business functions, such as registration, paying tuition and fees, and viewing course requirements on line.

Network and System Administration

Marywood University is committed to providing high quality technology for its students, faculty and staff. The Marywood data infrastructure began in 1987 and continues to grow with added fiber optic backbone, voice, data and video wiring, desktop and laptop computers, and mobile devices. The fiber optic backbone connects all major classroom, administrative buildings, and residence halls. Buildings are wired for voice, data and video with wireless capabilities widespread throughout the campus.

Web Development

The Web Team comprises all of the pieces that make the webpage possible, from policy, to design, to implementation. They are responsible for the organization and maintenance of the website and have an array of skills, such as programming, graphic design, photography, and videography that helps make department pages functional and unique.

Computer Labs

The Office of Information Technology maintains computer labs and drop-in areas in every major building on campus. A 24/7 computing facility is located in our largest dormitory, Loughran Hall. Most labs are Windows-based PCs with Macintosh computers in buildings housing graphic arts or education. All have a high-speed Internet connection and Microsoft Office as well as a number of specialized programs as needed by various departments.

Peer-to-Peer Policy Statement

Marywood University prohibits Peer to Peer (P2P) network traffic from the campus network because of its widespread use in distributing illegal or copyrighted material. The Office of Information Technology reserves the right to remove any computer in question from the network entirely if it is found to be distributing or collecting illegal or copyrighted material, or using excessive amounts of network bandwidth to the detriment of other computers on the network.

Definitions

On the Internet, P2P is a type of transient Internet network that allows a group of computer users with the same networking program to connect with each other and directly access files from one another's hard drives. The files can include music, videos, photos, games and other files.

These P2P programs include, but are not limited to, BitTorrent, Limewire, Gnutella, Vuze, Ares and Ants. Marywood University blocks the use of peer-to-peer applications on all network segments. The use of these applications can expose considerable vulnerabilities. P2P networks have been used to distribute viruses, malware and corrupted or mislabeled files, a threat that can severely impact university operations and online academic research. Malware exposure is a primary staging platform for identity and electronic financial theft.

Marywood University expects that all computers and networks on the campus will be used in a manner consistent with the Conditions of Computer Use Policy and compliant with applicable law. Marywood University is under no obligation to protect a user from a complaint or action arising from violation, or alleged violation, of the law. Users should understand that the fact that material is available for free on the Internet does not mean that accessing such material is authorized by third party rights-holders.

Marywood University prohibits the download and distribution of any copyrighted material, such as music, video, photos and software. Disproportionate bandwidth usage and copyright infringement are violations of the University's Conditions of Computer Use Policy.

Some Legal Alternatives for Downloading: AOL Music, ESPN360, Hulu Movies & TV, iTunes Movies, Music & TV, MTV Video, MySpace Music, Netflix Movies & TV, Pandora, VH1 Videos, Xbox Live Marketplace.

V. ACCREDITATIONS

Marywood University Accreditations/Approvals

Regional

Marywood University is accredited by the **Middle States Commission on Higher Education**,

3524 Market Street, Philadelphia, PA 19104

Phone: 267-284-5000

The Commission on Higher Education is the unit of the Middle States Association of Colleges and Schools that accredits degree-granting colleges and universities in the Middle States region, which includes Delaware, the District of Columbia, Maryland, New Jersey, New York, Pennsylvania, Puerto Rico, the U.S. Virgin Islands, and several locations abroad.

Professional

Business and Managerial Science Programs granting the B.B.A. Degrees at the Undergraduate Level and the M.B.A. and M.S. in Management Information System Degrees at the Graduate Level **Accreditation Council for Business Schools and Programs**, 7007 College Boulevard, Suite 420, Overland Park, KS 66211

Phone: 913-339-9356

The Nursing Program granting the B.S.N.

Accreditation Commission for Education in Nursing

3343 Peachtree Road NE, Suite 850, Atlanta, GA 30326

Phone: 404-975-5000

The Didactic Program, Coordinated Program, and Internship and Distance Internship Programs in the Nutrition and Dietetics Department

Accreditation Council for Education in Nutrition and Dietetics,

120 South Riverside Plaza, Suite 2000, Chicago, IL 60606

Phone: 312-899-0040

The Masters Degree in Physician Assistant Studies

Accreditation Review Committee on Education for the

Physician Assistant, Inc.,

12000 Findley Road, Suite 240, Duluth, GA 30097

Phone: 770-476-1224

The Graduate Art Therapy Program of the Department of Art

American Art Therapy Association, Inc.,

5999 Stevenson Ave., Alexandria, VA 22304

Phone: 888-290-0878 or 1-703-212-2238

The Undergraduate Music Therapy Program

American Music Therapy Association, Inc.

8455 Colesville Road, Suite 1000, Silver Spring, MD 20910

Phone: 301-589-3300

The Doctor of Psychology (Psy.D.) program in Clinical Psychology is accredited as a doctoral program in clinical psychology by the **American Psychological Association (APA)**,

Office of Program Consultation and Accreditation,

750 First Street, NE, Washington, DC 20002-4242

Phone: 202-336-5500

The Athletic Training Program in the Health and Physical Education Department

Commission on Accreditation of Athletic Training Education,

2201 Double Creek Drive, Suite 5006, Round Rock, TX 78664

Phone: 512-733-9700

Counseling Programs in Elementary Counseling, Secondary School Counseling and Mental Health Counseling

Council for Accreditation of Counseling and Related

Educational Programs,

5999 Stevenson Avenue, Alexandria, VA 22304

Phone: 703-823-9800 ext. 301

The Masters Program in Speech-Language Pathology

Council on Academic Accreditation, American Speech-

Language-Hearing Association,

10801 Rockville Pike, Rockville, MD 20852

Phone: 800-498-2071

The Masters and Baccalaureate of Social Work degree programs in the School of Social Work and Administrative Studies

Council on Social Work Education,

1725 Duke Street, Suite 500, Alexandria, VA 22314

Phone: 703-683-8080

Programs in Art and Design of the Department of Art

National Association of Schools of Art and Design,

11250 Roger Bacon Drive, Suite 21, Reston, VA 20190

Phone: 703-437-0700

Programs in Music

National Association of Schools of Music,

11250 Roger Bacon Drive, Suite 21, Reston, VA 20190

Phone: 703-437-0700

Programs for the preparation of elementary, secondary, K-12 and special education teachers and for the preparation of other school personnel including school psychologists, guidance counselors, principals, superintendents, librarians, reading specialists, speech and language pathologists, home school visitors, and supervisory personnel

National Council for Accreditation of Teacher Education

2010 Massachusetts Ave NW, Suite 500, Washington, DC 20036

Phone: 202-466-7496

VI. STRATEGIC PLAN GOALS AND OBJECTIVES

Marywood University

STRATEGIC PLAN GOALS AND OBJECTIVES 2010 - 2015

- GOAL 1: Create both academic and physical infrastructure to provide a learning environment that enables students to succeed academically and professionally.**
- Objective A:** *Enhance the quality of the Marywood educational experience.*
 - Objective B:** *Enhance and promote Marywood University's academic reputation.*
 - Objective C:** *Continue to expand research opportunities for faculty and students.*
 - Objective D:** *Improve physical environment for delivering instruction, conducting research, and accommodating alternative learning styles.*
- GOAL 2: Create a culturally diverse and global educational experience to educate students to live responsibly in a diverse and interdependent world.**
- Objective A:** *Increase the number of culturally diverse students, faculty, and staff.*
 - Objective B:** *Enhance curriculum to reflect the current global perspective.*
 - Objective C:** *Develop more sensitive and positive attitudes and behaviors toward cultural diversity by faculty, staff and students including attention to providing a welcoming and supportive campus.*
 - Objective D:** *Increase opportunities for study abroad and other cultural exchange experiences for students and faculty.*
- GOAL 3: Align resources to achieve institutional goals, with a focus on environmental stewardship.**
- Objective A:** *Improve information services and access for students, faculty, staff, and external audiences.*
 - Objective B:** *Improve financial position through revenue enhancement activity.*
 - Objective C:** *Improve the quality and efficiency of infrastructure.*
 - Objective D:** *Align human resource initiatives to institutional goals.*
 - Objective E:** *Create a campus-wide initiative to implement Sustainable Design Practices in all building and campus maintenance and operations, building renovations, and new construction.*